



OSAS + OSM = **OVER STROKE ACTIVE SAFETY** + **OVER STROKE MARKER**

ACTIVE SAFETY



OSAS



USAS



OPAS

Il nuovo codice sarà fornito solo ad esaurimento del vecchio

The new code will be supplied only when the old will be out of stock

Der neue Kode wird nur angegeben, wenn der alte nicht mehr lieferbar ist

Le nouveau code sera fourni uniquement lorsque le vieux stock sera écoulé

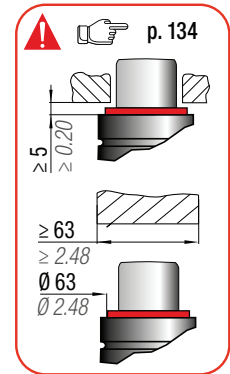
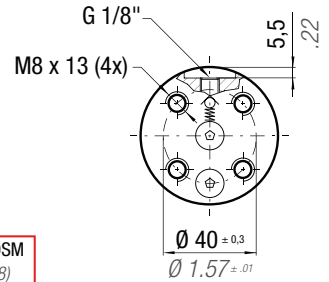
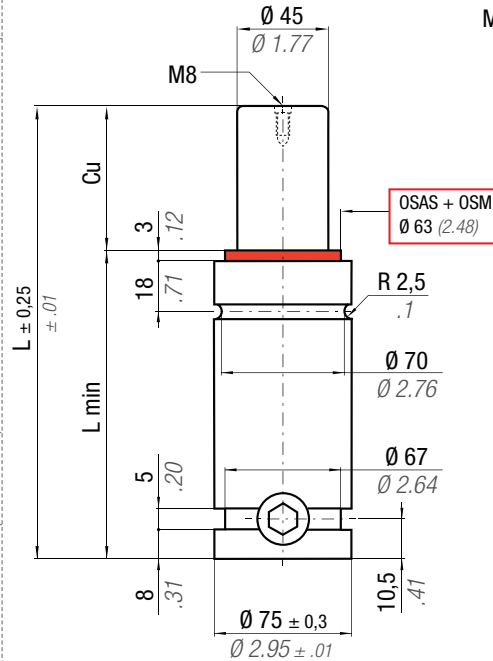
El nuevo código será suministrado sólo cuando se agoten las existencias del antiguo

O novo código irá ser fornecido apenas quando o antigo esgotar stock

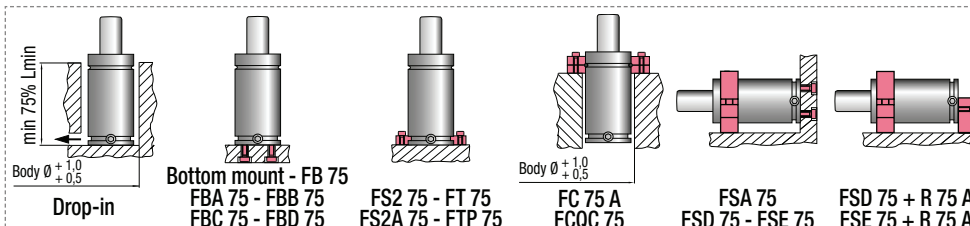
easu MANIPOL p. 247

* F_{1i} = Isothermal end force at 100% Cu p. 16

** F_{1p} = Polytrophic end force at 100% Cu



N ₂		0 - 80 °C 32 - 176 °F	ΔP ± 0,33 %/°C	P max 150 bar 2175 psi	P min 20 bar 290 psi	S 15,90 cm ² 2.465 in ²	SPM ~ 15 ÷ 100 (at 20°C)	Max Speed 1,8 m/s	Maintenance kit 39BMH02400D Cu 25 ÷ 80 39BMH02400DH Cu 100 ÷ 300	
CODE	NEW	Cu	L	L min	F ₀	F _{1i} *	F _{1p} **	V ₀	PED	
PHASING OUT from 04/2021		mm / inch	mm / inch	mm / inch	Initial force daN / lb	End force * daN / lb	End force ** daN / lb	cm ³ / in ³	~Kg / ~lb 2014/68/EU	
H 2400 - 025 - D	H 2400 - 025 - E	25 / 0.98	160 / 6.30	135 / 5.31	2385 / 5362 ± 5% 150 bar 2175 psi + 20 °C / +68 °F	3282 / 7378	3814 / 8574	169 / 10.32	3,34 / 7.36	✓
H 2400 - 038 - D	H 2400 - 038 - E	38 / 1.50	186 / 7.32	148 / 5.83		3495 / 7857	4146 / 9321	220 / 13.44	3,55 / 7.83	✓
H 2400 - 050 - D	H 2400 - 050 - E	50 / 1.97	210 / 8.27	160 / 6.30		3632 / 8165	4363 / 9807	267 / 16.31	3,75 / 8.27	✓
H 2400 - 063 - D	H 2400 - 063 - E	63 / 2.48	236 / 9.31	173 / 6.81		3741 / 8410	4537 / 10200	318 / 19.42	3,96 / 8.73	✓
H 2400 - 075 - D	H 2400 - 075 - E	75 / 2.95	260 / 10.24	185 / 7.28		3818 / 8583	4662 / 10480	366 / 22.30	4,15 / 9.15	✓
H 2400 - 080 - D	H 2400 - 080 - E	80 / 3.15	270 / 10.63	190 / 7.48		3845 / 8644	4706 / 10579	385 / 23.50	4,23 / 9.33	✓
H 2400 - 100 - D	H 2400 - 100 - E	100 / 3.94	310 / 12.20	210 / 8.27		3933 / 8842	4850 / 10902	464 / 28.29	4,51 / 9.94	✓
H 2400 - 125 - D	H 2400 - 125 - E	125 / 4.92	360 / 14.17	235 / 9.25		4012 / 9019	4979 / 11192	562 / 34.28	4,91 / 10.82	✓
H 2400 - 150 - D	H 2400 - 150 - E	150 / 5.91	410 / 16.14	260 / 10.24		4068 / 9146	5072 / 11402	660 / 40.28	5,32 / 11.73	✓
H 2400 - 160 - D	H 2400 - 160 - E	160 / 6.30	430 / 16.93	270 / 10.63		4087 / 9187	5103 / 11471	699 / 42.68	5,49 / 12.10	✓
H 2400 - 175 - D	H 2400 - 175 - E	175 / 6.89	460 / 18.11	285 / 11.22		4111 / 9243	5144 / 11563	758 / 46.27	5,73 / 12.63	✓
H 2400 - 200 - D	H 2400 - 200 - E	200 / 7.87	510 / 20.08	310 / 12.20		4145 / 9319	5200 / 11690	856 / 52.26	6,14 / 13.54	✓
H 2400 - 250 - D	H 2400 - 250 - E	250 / 9.84	610 / 24.02	360 / 14.17		4195 / 9431	5283 / 11876	1053 / 64.25	6,95 / 15.32	✓
H 2400 - 275 - D	H 2400 - 275 - E	275 / 10.83	660 / 25.98	385 / 15.16		4214 / 9473	5314 / 11947	1151 / 70.24	7,36 / 16.23	✓
H 2400 - 300 - D	H 2400 - 300 - E	300 / 11.81	710 / 27.95	410 / 16.14		4230 / 9509	5341 / 12007	1249 / 76.22	7,77 / 17.13	✓



HOW TO ORDER
p. 135

INSTALLATION GUIDELINE
p. 205