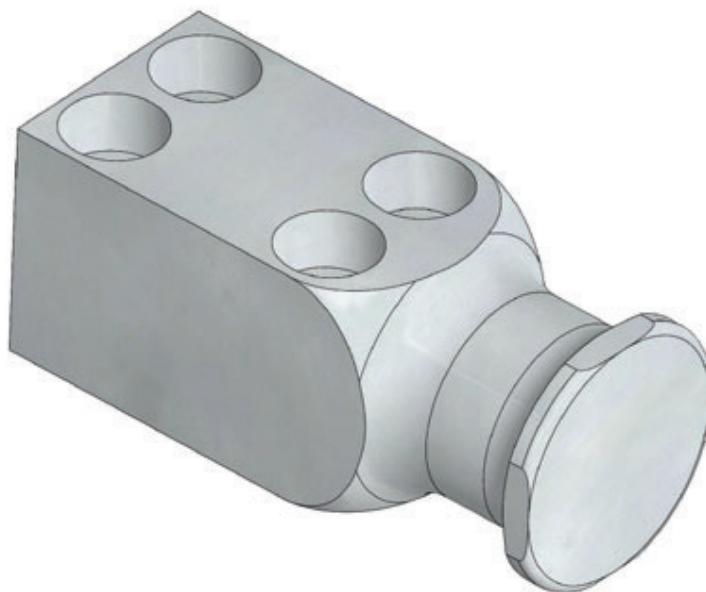


LIFTING BRACKET VDI 3366 - TRAGZAPFEN VDI 3366 - STAFFA DI SOLLEVAMENTO VDI 3366



FORM A



FORM B

Notes

Material: CK45 - 700÷800 N/mm²

Screws not included



Respect the max load
 Maximale Nutzlast beachten
 Rispettare il carico Max

WARNING - ACHTUNG - ATTENZIONE:

For safety reason, please consider always that the weight of the die has to be supported by just 2 lifting brackets.

Aus Sicherheitsgründen stets berücksichtigen, dass zwei Tragzapfens das gesamte Werkzeuggewicht tragen müssen.

Per ragioni di sicurezza, considerare sempre che il peso dello stampo deve essere sopportato da 2 sole staffe.



VW CODE
39D 876/11

VW CODE	Max load (kg)	Max die weight (kg)	FORM	VW CODE	Max load (kg)	Max die weight (kg)	FORM
39D 876/10	320	640	A	39D 876/15	5000	10000	A
39D 876/11	630	1260	A	39D 876/16	8000	16000	B
39D 876/12	1250	2500	A	39D 876/17	12500	25000	B
39D 876/13	2000	4000	A	39D 876/18	20000	40000	B
39D 876/14	3200	6400	A				