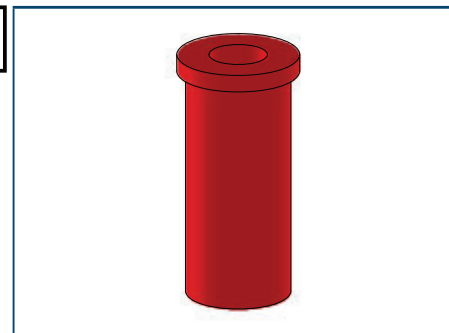
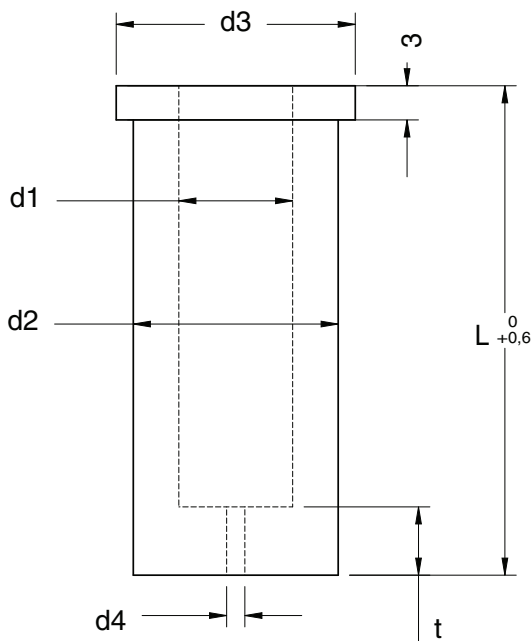


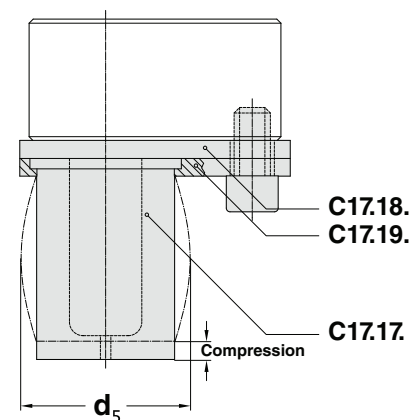
ELASTOMER STRIPPER - ABSTREIFER - ESTRATTORE PER PUNZONI



Notes

Material: Elastomer 95SH A

Application example



* values for the stripping force are dependent on a number of parameters (e.g. lubricant, temperature etc.) and may vary from those given here.
 ** max spring travel should not exceed 15% of the length



Art.	d1	L
C17.17.	10	43

CODE	d1	d2	d3	d4	d5	t	L
C17.17.1043	10	18	21	1,6	22	6	43
C17.17.1053	10	18	21	1,6	22	6	53
C17.17.1063	10	18	21	1,6	22	6	63
C17.17.1343	13	23	26	3	26,5	6	43
C17.17.1353	13	23	26	3	26,5	6	53
C17.17.1363	13	23	26	3	26,5	6	63
C17.17.1373	13	23	26	3	26,5	6	73
C17.17.1643	16	28	31	3	34	6	43
C17.17.1653	16	28	31	3	34	6	53
C17.17.1663	16	28	31	3	34	6	63
C17.17.1673	16	28	31	3	34	6	73
C17.17.2043	20	33	36	3	38	7	43
C17.17.2053	20	33	36	3	38	7	53
C17.17.2063	20	33	36	3	38	7	63
C17.17.2073	20	33	36	3	38	7	73
C17.17.2543	25	40	43	3	47,5	7	43
C17.17.2553	25	40	43	3	47,5	7	53
C17.17.2563	25	40	43	3	47,5	7	63
C17.17.2573	25	40	43	3	47,5	7	73

STROKE**	3mm	6mm	9mm	3mm	6mm	9mm	3mm	6mm	9mm	3mm	6mm	9mm
LENGHT	43	43	43	53	53	53	63	63	63	73	73	73

d1	Stripping forces (N)*											
10	1060	1820	-	900	1650	-	720	1450	1860	-	-	-
13	1700	2850	-	1460	2610	-	1170	2320	2910	930	2080	2500
16	2310	3900	-	1990	3560	-	1590	3150	3980	1270	2810	3440
20	2900	4900	-	2500	4470	-	2000	3950	5000	1590	3420	4330
25	4440	7520	-	3810	6860	-	3050	6050	7680	2420	5390	6780