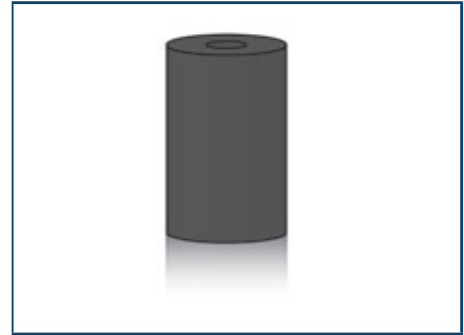
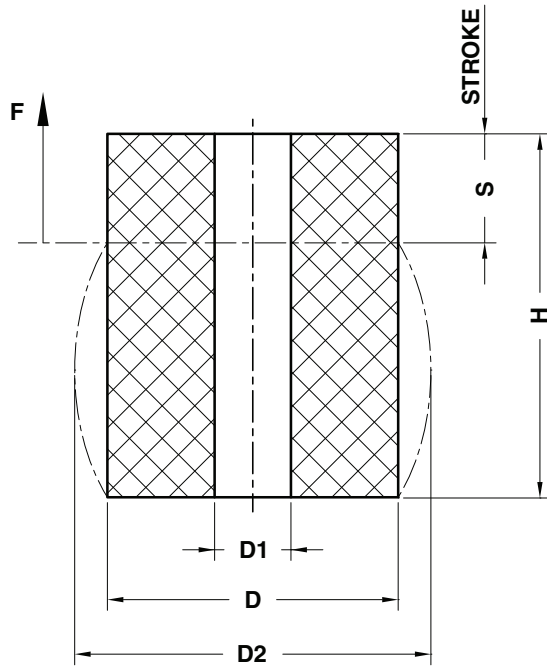


ELASTOMER SPRING - ELASTOMERFEDER - MOLLA IN ELASTOMERO



Notes

Material: Elastomer 70 Shore

ORDER EXAMPLE	Art.	D=63	H=80
	C17.11.	063	080

D	16	20	25	32	40	50	63	80	100	125
D1	6,5	8,5	10,5	13,5	13,5	17	17	21	21	27
D2	19	26	30	41	50	62	78	98	120	152
F (daN)	40	50	90	225	400	600	1000	1800	3000	5000

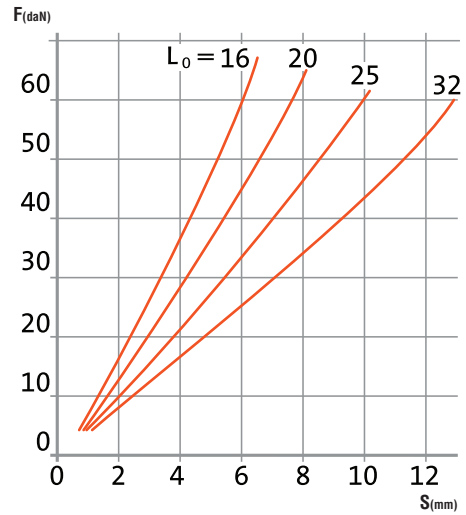
H	S										
12	4,8	•									
16	6,4	•	•								
20	8	•	•	•							
25	10	•	•	•							
32	12,8		•	•	•	•	•	•	•	•	•
40	16			•	•	•	•	•	•	•	•
50	20				•	•	•	•	•	•	•
63	25,2				•	•	•	•	•	•	•
80	32					•	•	•	•	•	•
100	40						•	•	•	•	•
125	50							•	•	•	•
160	64										•

LOAD DIAGRAMS FOR ELASTOMER SPRINGS 70 SHORE
KRAFT-WEG-DIAGRAMM ELASTOMERFEDERN 70 SHORE
DIAGRAMMI DI CARICO MOLLE IN ELASTOMERO 70 SHORE

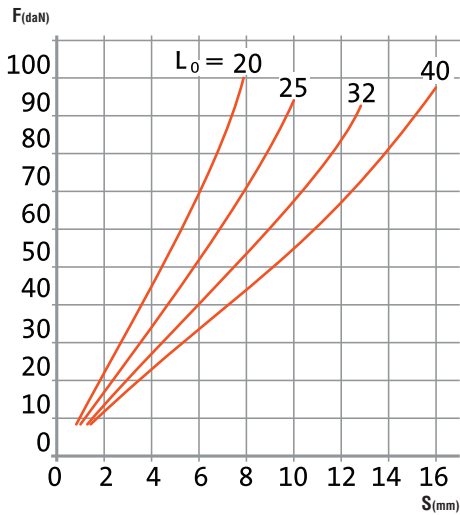
Ø16 x Ø6,5 x H



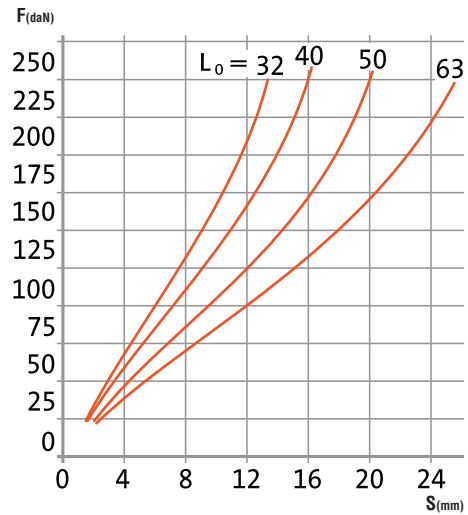
Ø20 x Ø8,5 x H



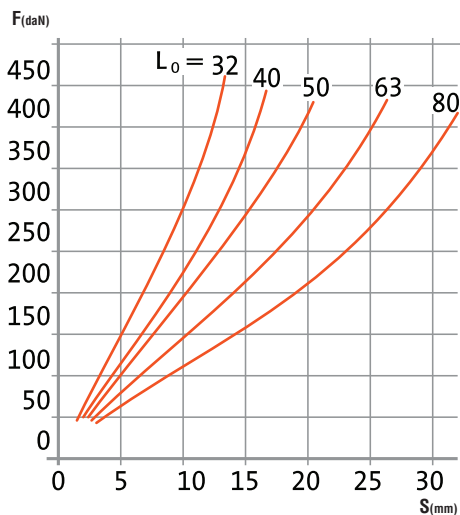
Ø25 x Ø10,5 x H



Ø32 x Ø13,5 x H



Ø40 x Ø13,5 x H



Standard OMCR

LOAD DIAGRAMS FOR ELASTOMER SPRINGS 70 SHORE
KRAFT-WEG-DIAGRAMM ELASTOMERFEDERN 70 SHORE
DIAGRAMMI DI CARICO MOLLE IN ELASTOMERO 70 SHORE

