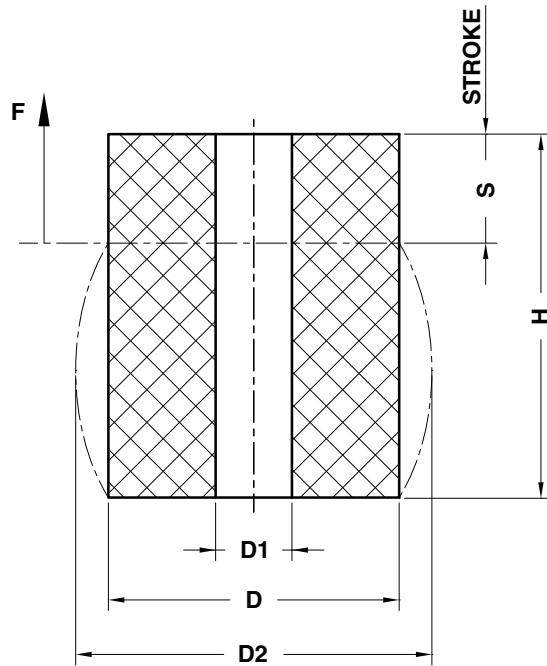


## ELASTOMER SPRING - ELASTOMERFEDER - MOLLA IN ELASTOMERO



S = max. 30% H

**Notes**  
**Material:** Elastomer 92SH

Standard OMCR

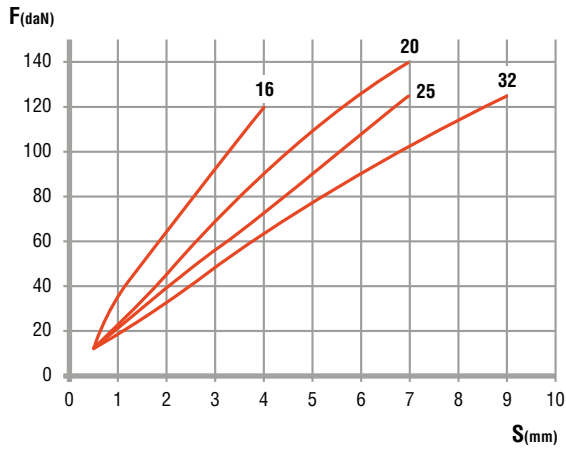
	Art.	D=63	H=80
	C17.10.	063	080

D	16	20	25	32	40	50	63	80	100	125
D1	6,5	8,5	10,5	13,5	13,5	17	17	21	21	27
D2	19	26	30	41	50	62	78	98	120	152
F (daN)	130	200	300	580	1250	1700	2600	4300	5900	9900

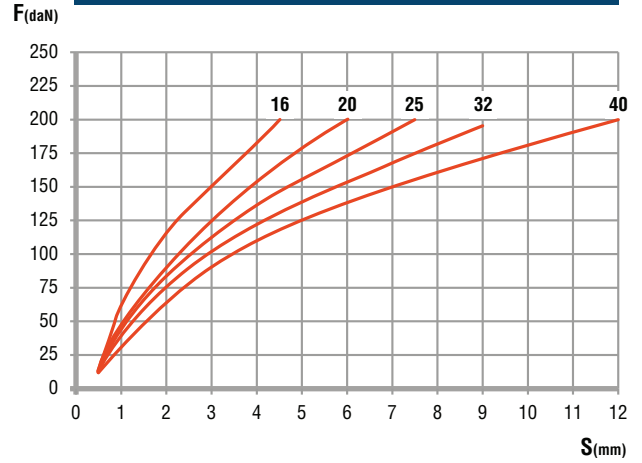
H	S									
16	4,8	•	•	•	•					
20	6	•	•	•	•	•				
25	7,5	•	•	•	•	•	•			
32	9,6	•	•	•	•	•	•	•		
40	12		•	•	•	•	•	•	•	
50	15			•	•	•	•	•	•	•
63	19				•	•	•	•	•	•
80	24					•	•	•	•	•
100	30						•	•	•	•
125	37,5							•	•	•
160	48								•	•

**LOAD DIAGRAMS FOR ELASTOMER SPRINGS 92SH**  
**KRAFT-WEG-DIAGRAMM ELASTOMERFEDERN 92SH**  
**DIAGRAMMI DI CARICO MOLLE IN ELASTOMERO 92SH**

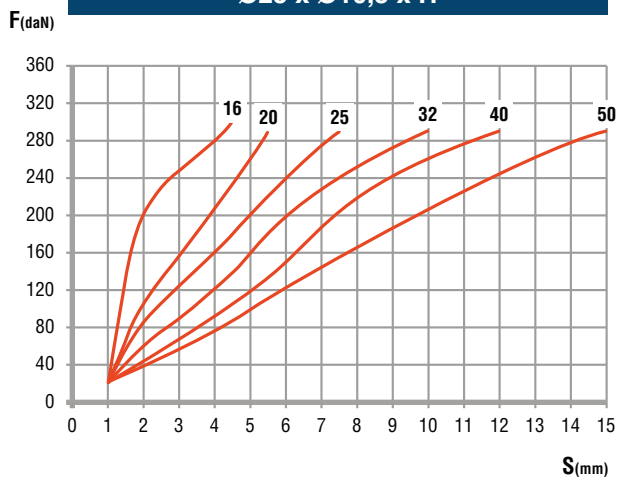
**Ø16 x Ø6,5 x H**



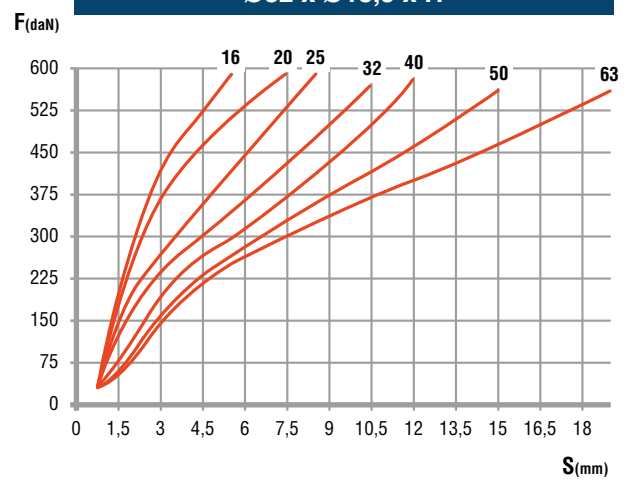
**Ø20 x Ø8,5 x H**



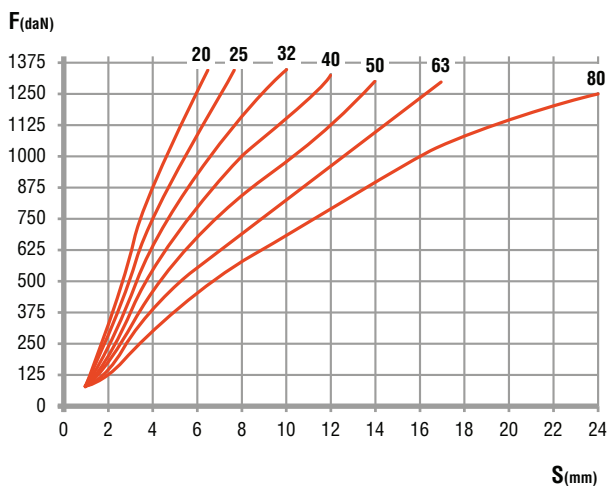
**Ø25 x Ø10,5 x H**



**Ø32 x Ø13,5 x H**



**Ø40 x Ø13,5 x H**



**LOAD DIAGRAMS FOR ELASTOMER SPRINGS 92SH  
KRAFT-WEG-DIAGRAMM ELASTOMERFEDERN 92SH  
DIAGRAMMI DI CARICO MOLLE IN ELASTOMERO 92SH**

Standard OMCR

