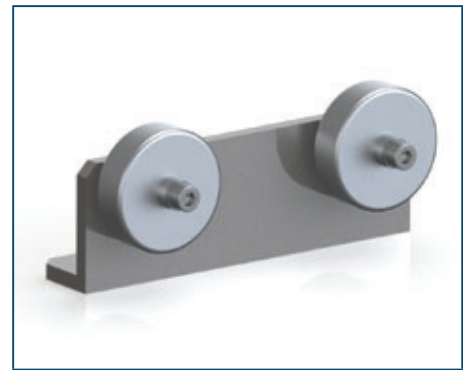
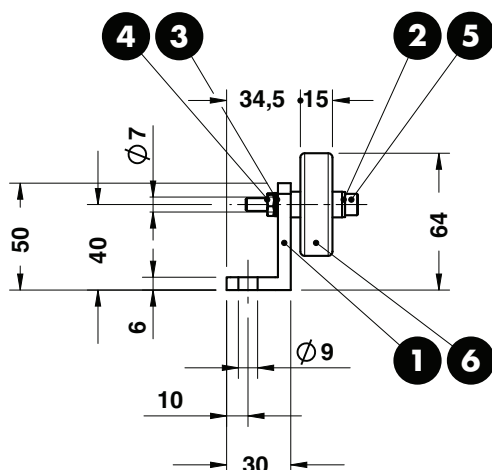
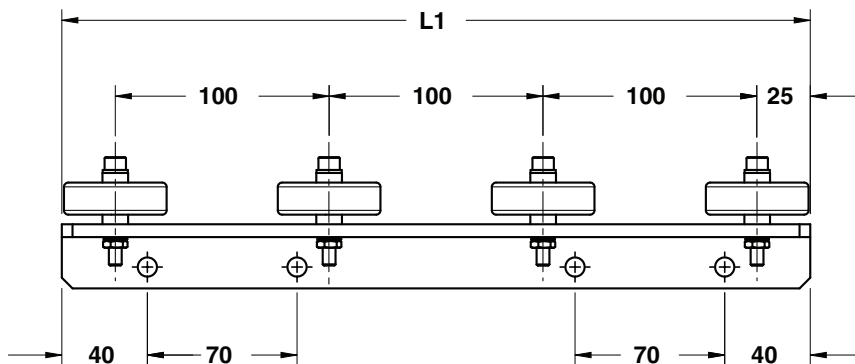
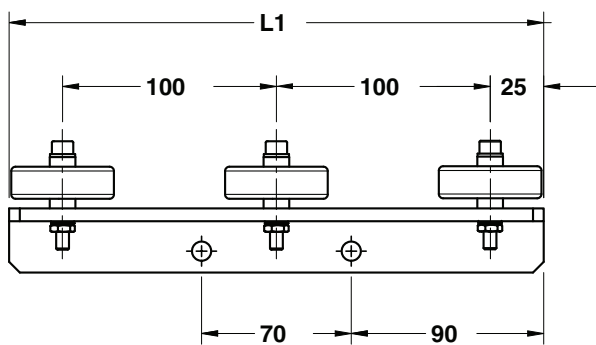
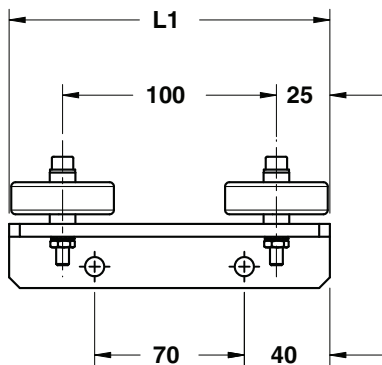


ROLLER GROUP - FÖRDERROLLE - GRUPPO RULLINI



STOCK



WEB

Notes

- 1** Material: St37
- 2** **3** Washers for M6
- 4** Nut for M6
- 5** Screw M6x40 DIN 912
- 6** Material: Steel - C16.19.48



Art.	L1
C16.21.	150

OMCR CODE	L1	Max Load (daN)
C16.21.150	150	50
C16.21.250	250	75
C16.21.350	350	100