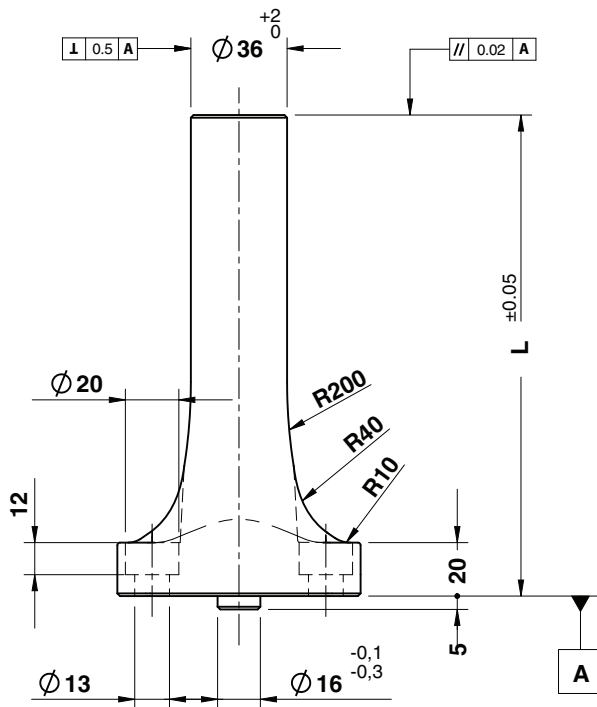
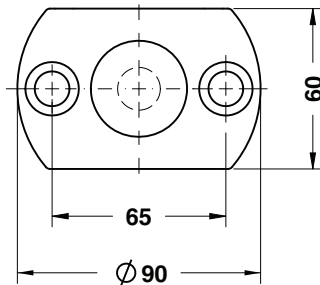


AIR PIN VDI 3002 - DRUCKBOLZEN VDI 3002 - CANDELA VDI 3002



TYPE 10



Standard OMCR

STOCK WEB

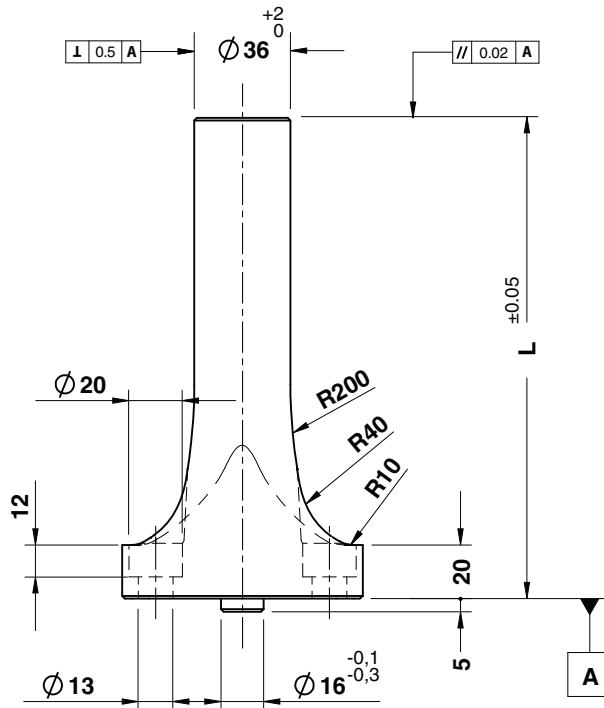
Respect the max. load
Maximale Nutzlast beachten
Rispettare il carico max.

Notes
Material: CK45
800÷ 1000 N/mm²

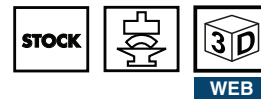
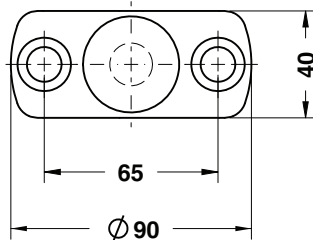
	Art.	TYPE	L=220
	C12.12.	10	220

OMCR CODE	TYPE	L	Max Load (kN)	OMCR CODE	TYPE	L	Max Load (kN)	OMCR CODE	TYPE	L	Max Load (kN)
C12.12.10150	10	150	50	C12.12.10215	10	215	50	C12.12.10280	10	280	50
C12.12.10155	10	155	50	C12.12.10220	10	220	50	C12.12.10285	10	285	50
C12.12.10160	10	160	50	C12.12.10225	10	225	50	C12.12.10290	10	290	50
C12.12.10165	10	165	50	C12.12.10230	10	230	50	C12.12.10295	10	295	50
C12.12.10170	10	170	50	C12.12.10235	10	235	50	C12.12.10300	10	300	50
C12.12.10175	10	175	50	C12.12.10240	10	240	50	C12.12.10310	10	310	50
C12.12.10180	10	180	50	C12.12.10245	10	245	50	C12.12.10320	10	320	50
C12.12.10185	10	185	50	C12.12.10250	10	250	50	C12.12.10330	10	330	50
C12.12.10190	10	190	50	C12.12.10255	10	255	50	C12.12.10340	10	340	50
C12.12.10195	10	195	50	C12.12.10260	10	260	50	C12.12.10350	10	350	50
C12.12.10200	10	200	50	C12.12.10265	10	265	50	C12.12.10360	10	360	50
C12.12.10205	10	205	50	C12.12.10270	10	270	50				
C12.12.10210	10	210	50	C12.12.10275	10	275	50				

AIR PIN VDI 3002 - DRUCKBOLZEN VDI 3002 - CANDELA VDI 3002



TYPE 11



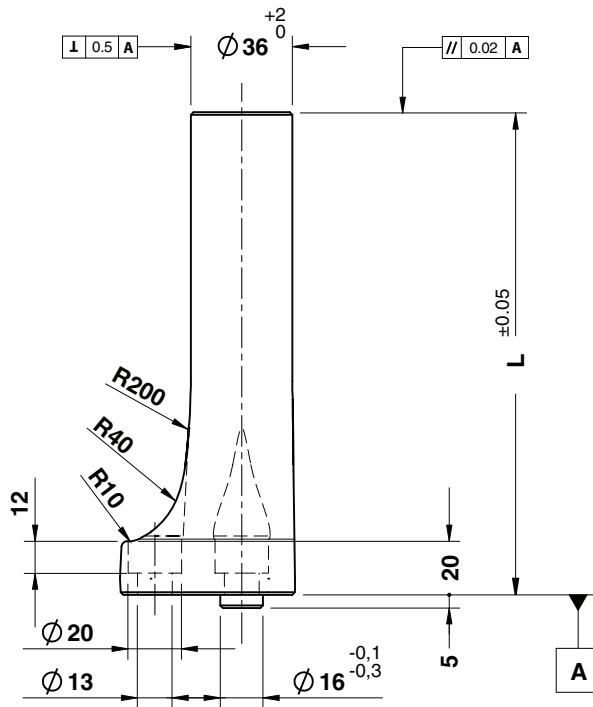
⚠
 Respect the max. load
 Maximale Nutzlast beachten
 Rispettare il carico max.

Notes
Material: CK45
 800÷1000 N/mm²

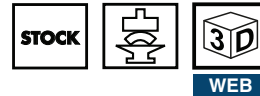
	Art.	TYPE	L=220
	C12.12.	11	220

OMCR CODE	TYPE	L	Max Load (kN)	OMCR CODE	TYPE	L	Max Load (kN)	OMCR CODE	TYPE	L	Max Load (kN)
C12.12.11150	11	150	50	C12.12.11215	11	215	50	C12.12.11280	11	280	50
C12.12.11155	11	155	50	C12.12.11220	11	220	50	C12.12.11285	11	285	50
C12.12.11160	11	160	50	C12.12.11225	11	225	50	C12.12.11290	11	290	50
C12.12.11165	11	165	50	C12.12.11230	11	230	50	C12.12.11295	11	295	50
C12.12.11170	11	170	50	C12.12.11235	11	235	50	C12.12.11300	11	300	50
C12.12.11175	11	175	50	C12.12.11240	11	240	50	C12.12.11310	11	310	50
C12.12.11180	11	180	50	C12.12.11245	11	245	50	C12.12.11320	11	320	50
C12.12.11185	11	185	50	C12.12.11250	11	250	50	C12.12.11330	11	330	50
C12.12.11190	11	190	50	C12.12.11255	11	255	50	C12.12.11340	11	340	50
C12.12.11195	11	195	50	C12.12.11260	11	260	50	C12.12.11350	11	350	50
C12.12.11200	11	200	50	C12.12.11265	11	265	50	C12.12.11360	11	360	50
C12.12.11205	11	205	50	C12.12.11270	11	270	50				
C12.12.11210	11	210	50	C12.12.11275	11	275	50				

AIR PIN VDI 3002 - DRUCKBOLZEN VDI 3002 - CANDELA VDI 3002



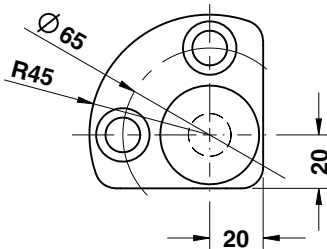
Standard OMCR



!
 Respect the max. load
 Maximale Nutzlast beachten
 Rispettare il carico max.

Notes
Material: CK45
 800 ÷ 1000 N/mm²

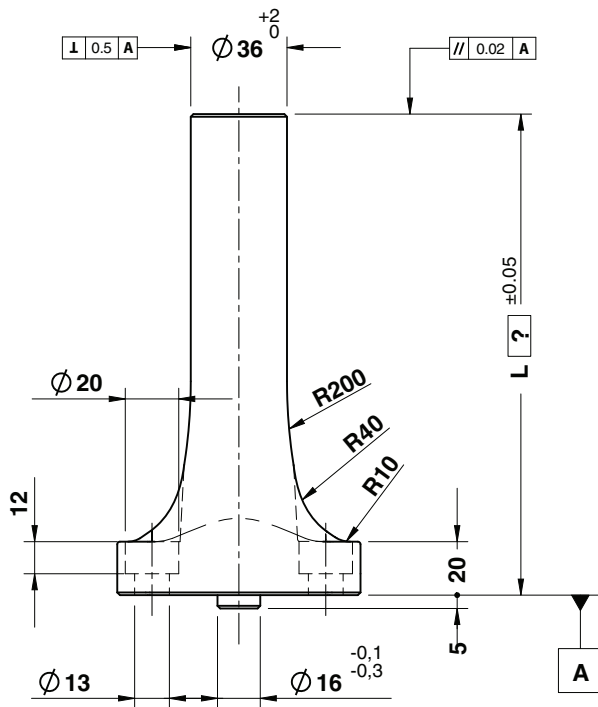
TYPE 12



ORDER EXAMPLE	Art.	TYPE	L=220
	C12.12.	12	220

OMCR CODE	TYPE	L	Max Load (kN)	OMCR CODE	TYPE	L	Max Load (kN)	OMCR CODE	TYPE	L	Max Load (kN)
C12.12.12150	12	150	50	C12.12.12215	12	215	50	C12.12.12280	12	280	50
C12.12.12155	12	155	50	C12.12.12220	12	220	50	C12.12.12285	12	285	50
C12.12.12160	12	160	50	C12.12.12225	12	225	50	C12.12.12290	12	290	50
C12.12.12165	12	165	50	C12.12.12230	12	230	50	C12.12.12295	12	295	50
C12.12.12170	12	170	50	C12.12.12235	12	235	50	C12.12.12300	12	300	50
C12.12.12175	12	175	50	C12.12.12240	12	240	50	C12.12.12310	12	310	50
C12.12.12180	12	180	50	C12.12.12245	12	245	50	C12.12.12320	12	320	50
C12.12.12185	12	185	50	C12.12.12250	12	250	50	C12.12.12330	12	330	50
C12.12.12190	12	190	50	C12.12.12255	12	255	50	C12.12.12340	12	340	50
C12.12.12195	12	195	50	C12.12.12260	12	260	50	C12.12.12350	12	350	50
C12.12.12200	12	200	50	C12.12.12265	12	265	50	C12.12.12360	12	360	50
C12.12.12205	12	205	50	C12.12.12270	12	270	50				
C12.12.12210	12	210	50	C12.12.12275	12	275	50				

AIR PIN VDI 3002 - DRUCKBOLZEN VDI 3002 - CANDELA VDI 3002



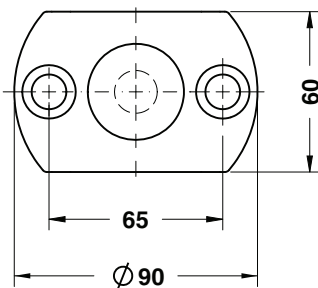
⚠
 Lmax = 360 mm
 Respect the max. load
 Maximale Nutzlast beachten
 Rispettare il carico max.

Notes
Material: C45
 800 ÷ 1000 N/mm²

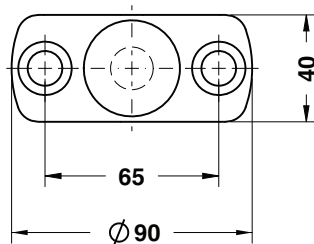
ORDER EXAMPLE	Art.	TYPE	L=220
	C12.12.	10	220

OMCR CODE	TYPE	Max Load (kN)
C12.12.	10	50
C12.12.	11	50
C12.12.	12	50

TYPE 10



TYPE 11



TYPE 12

