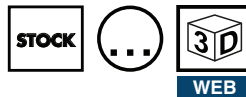
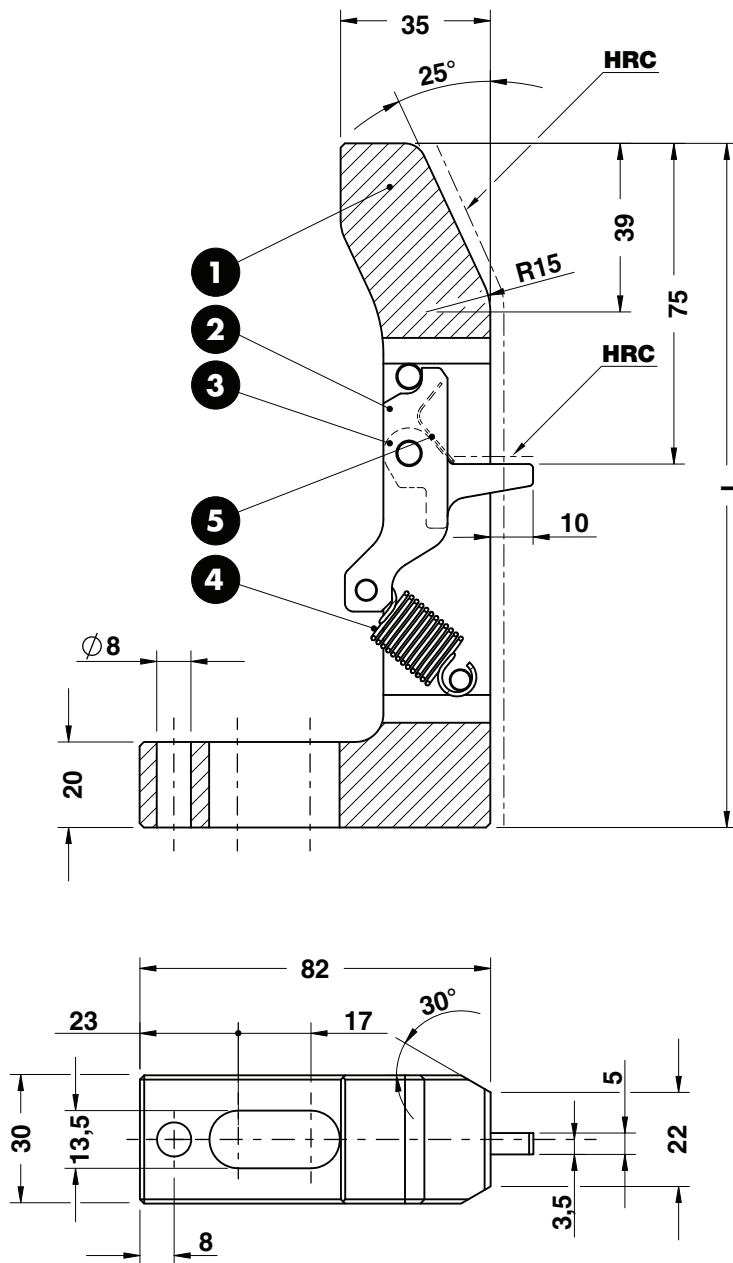


GAGE - EINWEISER - RIFERIMENTO



Notes

- 1 3** Material: CK45 - HRC: 58÷60
- 2** Material: CK45 - HRC: 54÷56
- 4** Spring
- 5** Spring



Art.	L=160
C10.30.	160

OMCR CODE	L	F1(N)	F2(N)
C10.30.160	160	5,9	18,5
C10.30.170	170	5,9	18,5
C10.30.180	180	5,9	18,5
C10.30.190	190	5,9	18,5
C10.30.200	200	5,9	18,5

Application example

