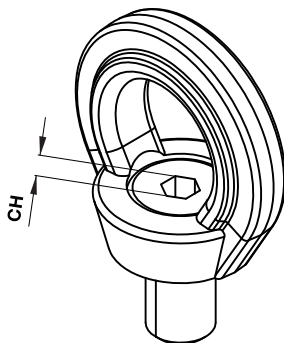
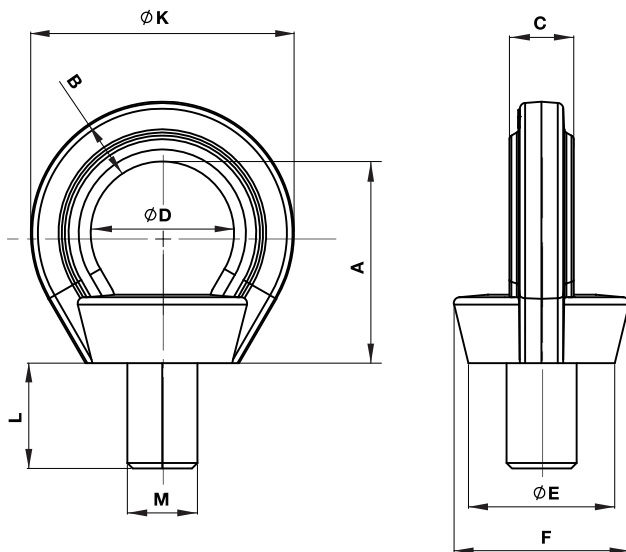


ROTATING EYEBOLT H.T. - RINGSCHRAUBE H.T. - GOLFARE GIREVOLE H.T.



FORESEEN USE

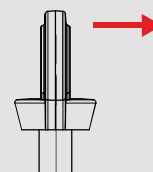
Turning eyebolt needed to lift loads to assemble to the load itself with specific threaded hole generally used to turn or tilt heavy loads.

- Safety coefficient 4 in all loading directions
- Designed, tested and certified in compliance with the technical directives GS-OA 15-04 EN 1677
- Suitable for safe lifting in compliance with the machinery directive 2006/42/EC
- Can be oriented at 360°
- Tested at 100 % magnaflux
- Tested at 20.000 stress cycles
- Ideal for fastening at 90°
- Captive screws
- On the axial pull there can be variation of +/-5° with a 10% decrease in capacity

Accordingly with the requirements of "DGUV – German institution for security" please use the devise with the screw supplied, if replaced OMCR Srl disclaims any and all responsibility or liability.

**Not suitable for continuous rotation during loading**

**CONFIGURATION NOT RECOMMENDED**



	Art.	Screw Dim.	OPTION KEY
	B03.10.	010	W

OMCR CODE	Size (mm)	W.L.L. (t)	A (mm)	B (mm)	C (mm)	D (Ømm)	E (Ømm)	F (mm)	K (mm)	L (mm)	CH (mm)	Weight (Kg)
B03.10.006	M06	0,1	27	9,5	7	20	23	27,7	37	9	6	0,08
B03.10.008	M08	0,3	33,7	10	9,8	25	25,5	30	46	12	6	0,120
B03.10.010	M10	0,4	33,7	10	9,8	25	25,5	30	46	15	6	0,120
B03.10.012	M12	0,75	41,5	12,5	11,5	30	30,6	36,5	55,5	18	8	0,200
B03.10.016	M16	1,5	49,5	14,5	15,7	35	36,5	42	64,5	24	10	0,350
B03.10.020	M20	2,3	58	16	18	40	42	52,5	74,5	30	12	0,600
B03.10.024	M24	3,2	69	20,5	22	49	50	61	90	36	12	1,000
B03.10.030	M30	4,5	86	25,5	28	60	66	75	111	45	17	2,000
B03.10.036	M36	7	105	32	30	74	77	96,5	135	55	22	3,400
B03.10.042	M42	9	118	38	37	82	87	110	158	65	24	5,700
B03.10.048	M48	12	137	43	38	95	102	124,5	180	72	27	8,500

### WORKING LOAD LIMIT W.L.L. (t)

OMCR CODE	Size (mm)											Max tightening couple (Nm)
		0° Single leg	0° 2 legs	90° Single leg	90° 2 legs	2 legs		3/4 legs				
B03.10.006	M06	0,5	1	0,1	0,2	0,14	0,1	0,1	0,21	0,15	0,1	6
B03.10.008	M08	1	2	0,3	0,6	0,42	0,3	0,3	0,63	0,45	0,3	8
B03.10.010	M10	1	2	0,4	0,8	0,56	0,4	0,4	0,84	0,6	0,4	16
B03.10.012	M12	2	4	0,75	1,5	1	0,75	0,75	1,6	1,12	0,75	25
B03.10.016	M16	4	8	1,5	3	2	1,5	1,5	3,15	2,25	1,5	60
B03.10.020	M20	6	12	2,3	4,6	3,22	2,3	2,3	4,83	3,45	2,3	110
B03.10.024	M24	8	16	3,2	6,4	4,48	3,2	3,2	6,7	4,8	3,2	195
B03.10.030	M30	12	24	4,5	9	6,3	4,5	4,5	9,4	6,7	4,5	320
B03.10.036	M36	16	32	7	14	9,8	7	7	14,7	10,5	7	585
B03.10.042	M42	24	45	9	18	12,6	9	9	18,9	13,5	9	920
B03.10.048	M48	32	64	12	24	16,8	12	12	25,2	18	12	1590

Lifting Elements

# B03.10

## KEY - SCHLÜSSEL - CHIAVE

	Art.	Thread=M10
	B03.10.	C10

OMCR CODE	Size (mm)	OMCR CODE	Size (mm)
B03.10.C06	M06	B03.10.024	M24
B03.10.C08	M08	B03.10.030	M30
B03.10.C10	M10	B03.10.036	M36
B03.10.C12	M12	B03.10.042	M42
B03.10.C16	M16	B03.10.048	M48
B03.10.C20	M20		

