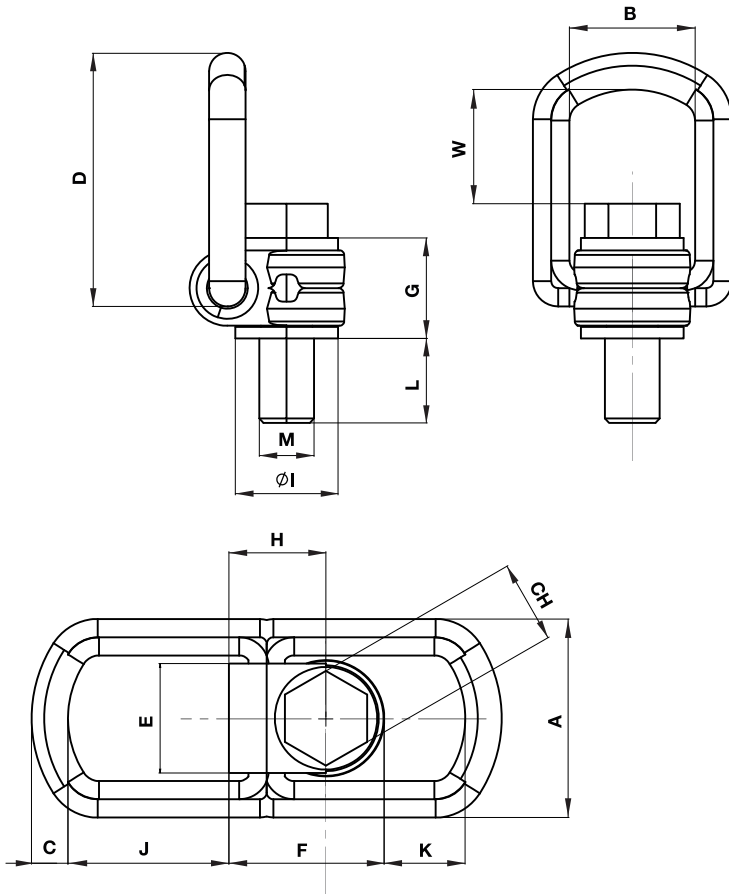


ROTATING EYEBOLT WITH CLAMP - LASTBOCK - GOLFARE GIREVOLE CON STAFFA



Notes

PULL AT 90° with minimum overall dimensions.

Available on demand **-40°C**.

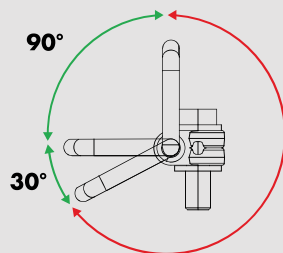


FORESEEN USE
Anchorage point for load lifting.

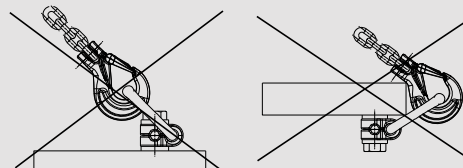
- Safety coefficient 4 in all loading directions
- Designed, tested and certified in compliance with the technical directives GS-OA 15-04 – EN 1677
- Suitable for safe lifting in compliance with the machinery directive 2006/42/EC
- Can be oriented at 360°
- Tested at 100 % magnaflux
- Tested at 20.000 stress cycles
- The screw is protected with the GEOMET system which guarantees lasting protection in time
- Ideal for fastening at 90°
- Captive screws.

Accordingly with the requirements of "DGUV – German institution for security" please use the device with the screw supplied, if replaced OMCR Srl disclaims any and all responsibility or liability.

Not suitable for continuous rotation during loading



NOT ALLOWED





Art.	Screw Dim.
B03.15.	010

OMCR CODE	Size (mm)	W.L.L. (t)	A (mm)	B (mm)	C (mm)	D (mm)	E (mm)	F (mm)	G (mm)	H (mm)	I (mm)	L (mm)	W (mm)	J (mm)	K (mm)	Ch (mm)	Weight (Kg)
B03.15.008	M8	0,3	57	34	10	78	24	41	30	26,5	25	15	43	51	35	13	0,275
B03.15.010	M10	0,63	57	34	10	78	24	41	30	26,5	25	15	42	51	35	17	0,290
B03.15.012	M12	1	66	38	13,5	85	30	50	36	33	32	23	40	52	28	19	0,500
B03.15.016	M16	1,5	66	38	13,5	85	30	50	36	33	32	24	38	52	28	24	0,510
B03.15.020	M20	2,5	87	55	16	111	48	68	44	42,5	45	31	54	71	36	30	1,250
B03.15.024	M24	4	87	55	16	111	48	68	44	42,5	45	37	51	71	36	36	1,300
B03.15.030	M30	5	109	66	22,5	145	54	91	65	58,5	60	45	62	86	47	46	3,250
B03.15.036	M36	8	136	78	28	190	62	108	81	72,5	70	59	88	115	74	55	5,900
B03.15.042	M42	10	136	78	28	190	62	108	75	72,5	70	75	86	115	70	65	6,500
B03.15.142	M42	15	169	97	36	242	68	131	89	87,5	85	63	121	151	97	65	11,200
B03.15.048	M48	20	169	97	36	242	68	131	89	87,5	95	71	117	151	93	75	11,600

WORKING LOAD LIMIT W.L.L. (t)

OMCR CODE	Size (mm)											Max tightening couple (Nm)
		0° Single leg	0° 2 legs	90° Single leg	90° 2 legs	2 legs		3/4 legs				
B03.15.008	M8	0,3	0,6	0,3	0,6	0,42	0,3	0,3	0,63	0,45	0,3	30
B03.15.010	M10	0,63	1,26	0,63	1,26	0,88	0,63	0,63	1,32	0,95	0,63	60
B03.15.012	M12	1	2	1	2	1,4	1	1	2,1	1,5	1	100
B03.15.016	M16	1,5	3	1,5	3	2,1	1,5	1,5	3,15	2,25	1,5	150
B03.15.020	M20	2,5	5	2,5	5	3,5	2,5	2,5	5,25	3,75	2,5	250
B03.15.024	M24	4	8	4	8	5,6	4	4	8,4	6	4	400
B03.15.030	M30	5	10	5	10	7	5	5	10,5	7,5	5	500
B03.15.036	M36	8	16	8	16	11,2	8	8	16,8	12	8	800
B03.15.042	M42	10	20	10	20	14	10	10	21	15	10	925
B03.15.142	M42	15	30	15	30	21	15	15	31,5	22,5	15	1500
B03.15.048	M48	20	40	20	40	28	20	20	42	30	20	2000

Lifting Elements