

REPLACEMENT LIFTING PIN FOR LIFTING BRACKET BMW ERSATZTRAGBOLZEN FÜR TRAGWANGE BMW PERNO DI RICAMBIO PER STAFFA DI SOLLEVAMENTO BMW



Respect the max load
Maximale Nutzlast beachten
Rispettare il carico Max

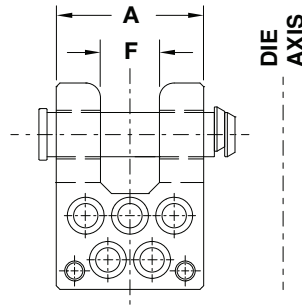
WARNING - ACHTUNG - ATTENZIONE:

For safety reason, please consider always that the weight of the die has to be supported by just 2 lifting pins.

Aus Sicherheitsgründen stets berücksichtigen, dass zwei Tragbolzen das gesamte Werkzeuggewicht tragen müssen.

Per ragioni di sicurezza, considerare sempre che il peso dello stampo deve essere sopportato da 2 soli perni.

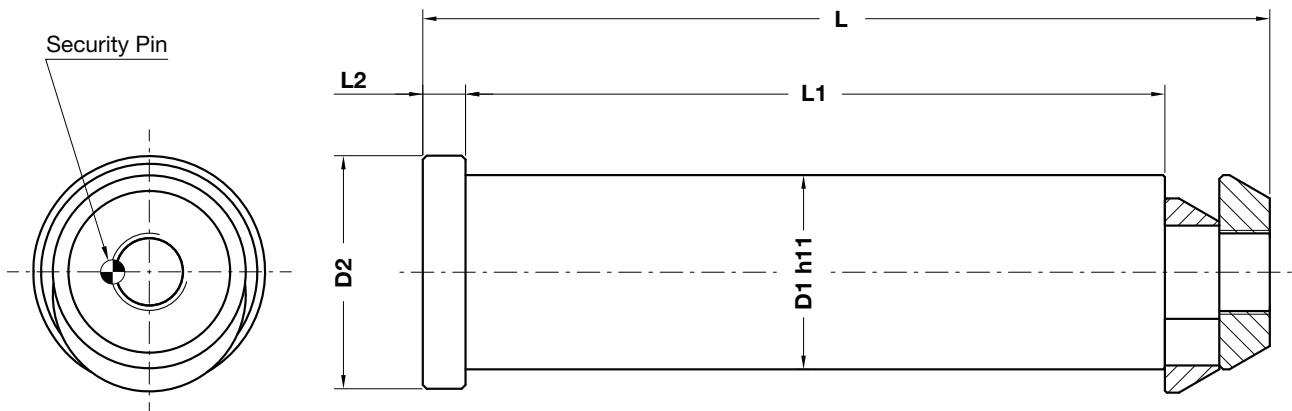
According - Nach - Secondo:
B01.20



Notes

Material:

See table - siehe Tabelle - vedi tabella



ORDER EXAMPLE	Art.	D1=80	Type
	B02.40.	80	A

OMCR CODE	Max load (kg)	Max die weight (kg)	Type	A	F	D1	D2	L	L1	L2	Material
B02.40.30	3200	6400	-	126	50	30	40	158	129	10	CK45
B02.40.40	5000	10000	-	150	60	40	50	187	155	10	CK45
B02.40.50	8000	16000	-	175	75	50	60	220	180	11	CK45
B02.40.60	12500	25000	-	200	80	60	70	246	205	11	CK45
B02.40.80	18000	36000	-	250	100	80	90	305	255	12	CK45
B02.40.80A	25000	50000	A	300	120	80	90	360	310	12	42CrMo4 + QT
B02.40.80B	31500	63000	B	345	135	80	90	405	355	22	42CrMo4 + QT