

LIFTING PIN VOLVO TRAGBOLZEN MIT FALLRINGSICHERUNG UND FEDER NACH VOLVO NORM PERNO DI SOLLEVAMENTO VOLVO



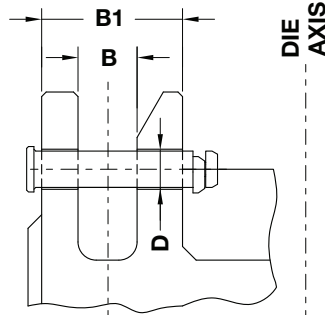
Respect the max load
Maximale Nutzlast beachten
Rispettare il carico Max

WARNING - ACHTUNG - ATTENZIONE:
For safety reason, please consider always that the weight of the die has to be supported by just 2 lifting pins.

Aus Sicherheitsgründen stets berücksichtigen, dass zwei Tragbolzen das gesamte Werkzeuggewicht tragen müssen.

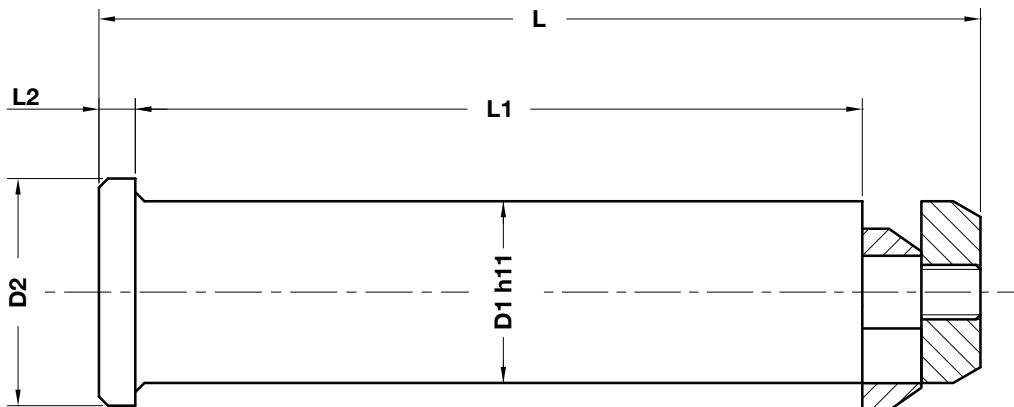
Per ragioni di sicurezza, considerare sempre che il peso dello stampo deve essere sopportato da 2 soli perni.

According - Nach - Secondo:
BCD8271,81 01/2015



Notes

Material: St52



ORDER EXAMPLE	Art.	D1=63	Type
	B02.35.	63	C

OMCR CODE	Max load (kg)	Max die weight (kg)	Type	A	B	B1	C	D	D1	D2	E	L	L1	L2
B02.35.40	2500	5000	-	40	65	155	50	42	40	50	100	195	160	8
B02.35.63C	8000	16000	C	60	100	220	60	65	63	75	125	285	230	14
B02.35.63	12000	24000	-	80	100	260	80	65	63	75	125	327	275	14
B02.35.80	20000	40000	-	100	120	320	100	82	80	95	180	402	340	15