

LIFTING PIN PSA-RENAULT TRAGBOLZEN MIT FALLRINGSICHERUNG UND FEDER NACH PSA-RENAULT NORM PERNO DI SOLLEVAMENTO PSA-RENAULT



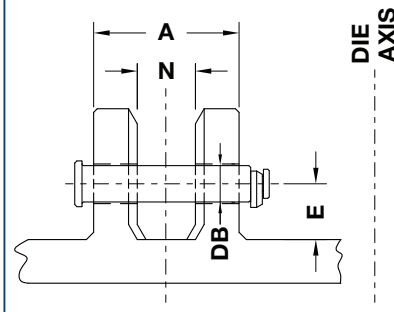
Respect the max load
Maximale Nutzlast beachten
Rispettare il carico Max

WARNING - ACHTUNG - ATTENZIONE:
For safety reason, please consider always that the weight of the die has to be supported by just 2 lifting pins.

Aus Sicherheitsgründen stets berücksichtigen, dass zwei Tragbolzen das gesamte Werkzeuggewicht tragen müssen.

Per ragioni di sicurezza, considerare sempre che il peso dello stampo deve essere sopportato da 2 soli perni.

According - Nach - Secondo:
EM24.50.400 ed. 07/2006
EM24.59.950 ed. 07/2006



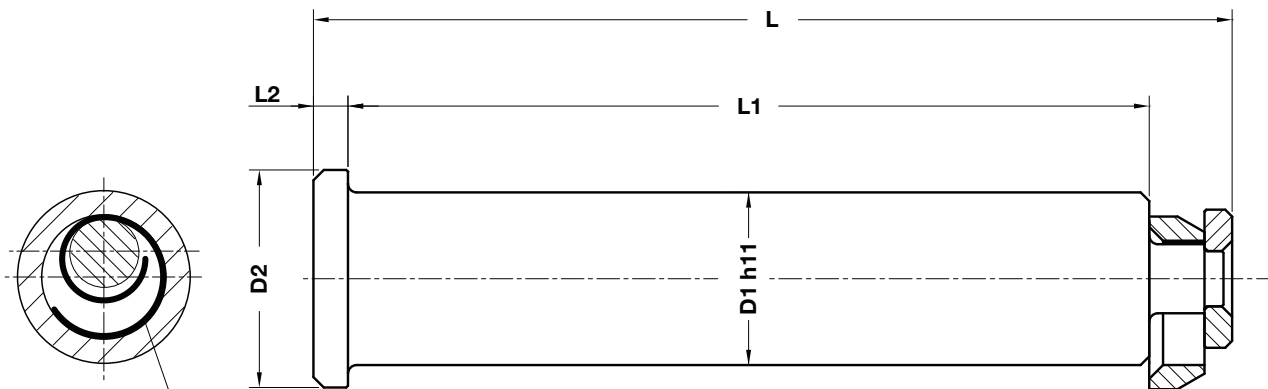
Notes

Material: St52



WEB

WEB



The part is supplied complete of steel spring

ORDER EXAMPLE	Art.	D1=50
	B02.30.	50

OMCR CODE	Max load (kg)	Max die weight (kg)	A	E	DB	D1	D2	L	L1	L2	N
B02.30.32	6000	12000	125	55	34	32	40	154	132	6	50
B02.30.40	9000	18000	160	70	42	40	50	197,5	170	8	65
B02.30.50	14000	28000	200	90	52	50	63	247,5	212	10	80
B02.30.63	22500	45000	250	100	65	63	80	309	265	12	100