

## LIFTING PIN OPEL-GM TRAGBOLZEN MIT FALLRINGSICHERUNG UND FEDER NACH OPEL-GM NORM PERNO DI SOLLEVAMENTO OPEL-GM



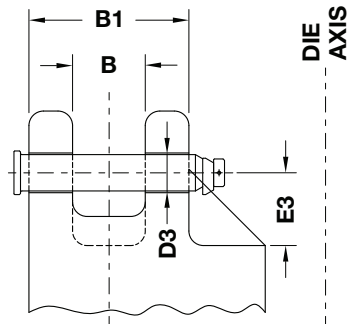
Respect the max load  
Maximale Nutzlast beachten  
Rispettare il carico Max

**WARNING - ACHTUNG - ATTENZIONE:**  
For safety reason, please consider always that the weight of the die has to be supported by just 2 lifting pins.

Aus Sicherheitsgründen stets berücksichtigen, dass zwei Tragbolzen das gesamte Werkzeuggewicht tragen müssen.

Per ragioni di sicurezza, considerare sempre che il peso dello stampo deve essere sopportato da 2 soli perni.

According - Nach - Secondo:  
15.30.00 ed. 05/2007



### Notes

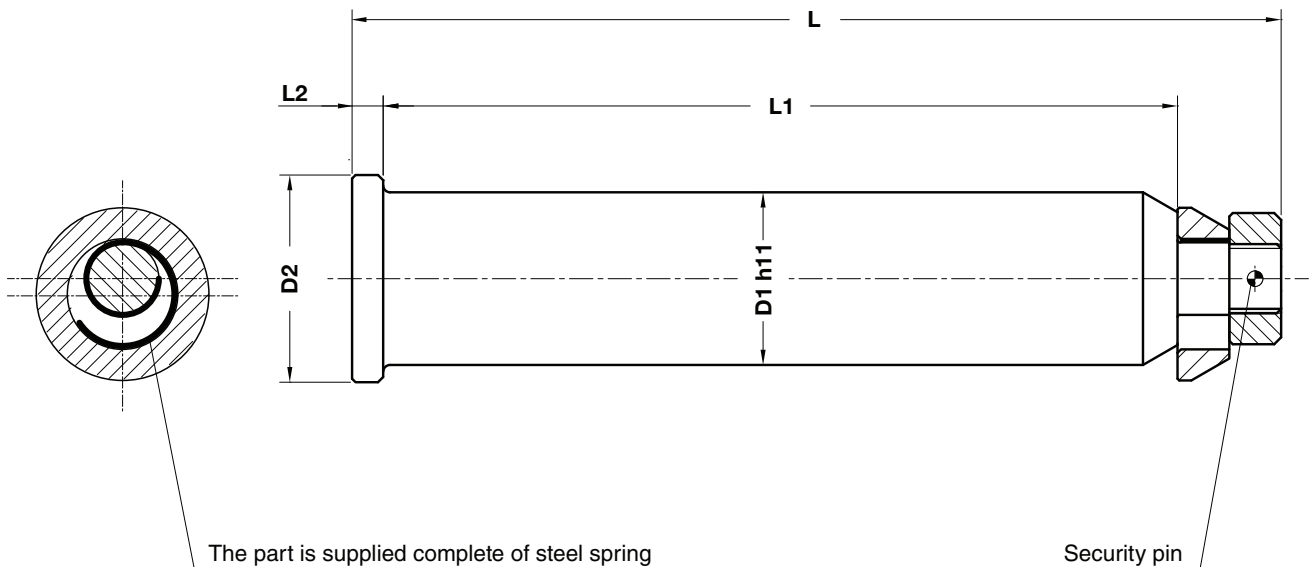
**Material:** 42CrMo4 + QT

STOCK



WEB

WEB



Lifting Elements

ORDER EXAMPLE	Art.	D1=80
	B02.26.	80

OMCR CODE	Max load (kg)	Max die weight (kg)	B	B1	D1	D2	D3	E3	L	L1	L2
B02.26.32	3400	6800	70	150	32	40	34	65	177	155	5
B02.26.40	5650	11300	80	180	40	50	42	85	220	188	7
B02.26.50	8950	17900	100	220	50	60	52	100	270	230	9
B02.26.63	14350	28700	120	280	63	75	65	125	342	295	16
B02.26.80	26700	53400	120	320	80	89	82	160	387	335	16