

LIFTING PIN NISSAN TRAGBOLZEN MIT FALLRINGSICHERUNG UND FEDER NACH NISSAN NORM PERNO DI SOLLEVAMENTO NISSAN



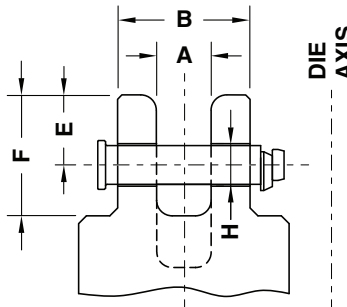
Respect the max load
Maximale Nutzlast beachten
Rispettare il carico Max

WARNING - ACHTUNG - ATTENZIONE:
For safety reason, please consider always that the weight of the die has to be supported by just 2 lifting pins.

Aus Sicherheitsgründen stets berücksichtigen, dass zwei Tragbolzen das gesamte Werkzeuggewicht tragen müssen.

Per ragioni di sicurezza, considerare sempre che il peso dello stampo deve essere sopportato da 2 soli perni.

According - Nach - Secondo:
K1140-40÷80



Notes

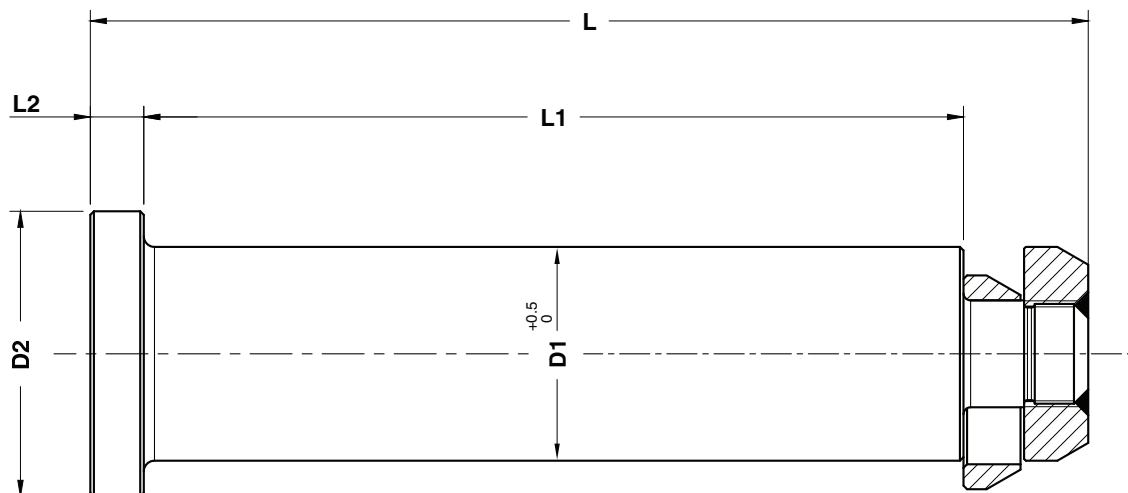
Material: 42CrMo4 + QT

STOCK



WEB

WEB



ORDER EXAMPLE	Art.	D1=50
	B02.23.	50

OMCR CODE	Max load (kg)	Max die weight (kg)	A	B	H	D1	D2	E	F	L	L1	L2
B02.23.40	2000	4000	50	150	41,5	40	60	50	110	210	160	15
B02.23.50	3000	6000	70	210	51,5	50	70	75	150	270	220	15
B02.23.60	5000	10000	80	220	61,5	60	80	100	195	280	230	15
B02.23.70	7500	15000	80	240	71,5	70	90	110	210	300	250	15
B02.23.80	17500	35000	90	290	82	80	100	120	230	350	300	15