

LIFTING PIN FORD TRAGBOLZEN MIT FALLRINGSICHERUNG UND FEDER NACH FORD NORM PERNO DI SOLLEVAMENTO FORD



Respect the max load
Maximale Nutzlast beachten
Rispettare il carico Max

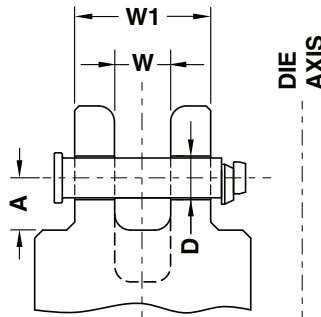
WARNING - ACHTUNG - ATTENZIONE:

For safety reason, please consider always that the weight of the die has to be supported by just 2 lifting pins.

Aus Sicherheitsgründen stets berücksichtigen, dass zwei Tragbolzen das gesamte Werkzeuggewicht tragen müssen.

Per ragioni di sicurezza, considerare sempre che il peso dello stampo deve essere sopportato da 2 soli perni.

According - Nach - Secondo:
W-DX 12-04



Notes

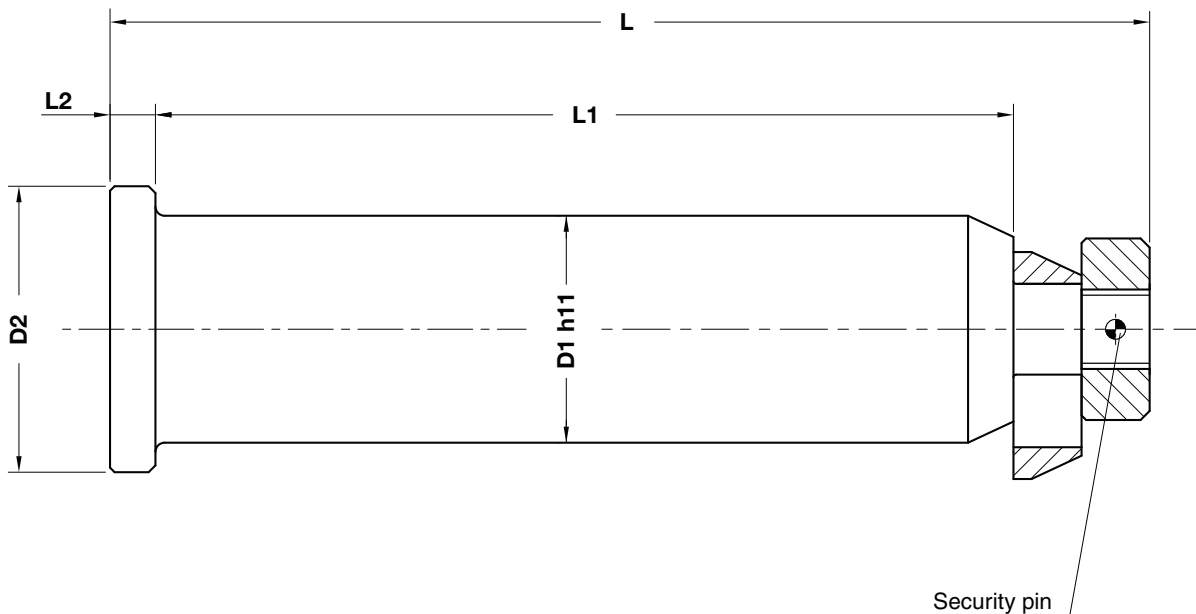
Material: 42CrMo4 + QT

STOCK



WEB

WEB



Lifting Elements

ORDER EXAMPLE	Art.	D1=50
	B02.22.	50

OMCR CODE	Max load (kg)	Max die weight (kg)	A	D	D1	D2	L	L1	L2	W	W1
B02.22.35	1500	3000	60	37	35	45	165	125	10	50	110
B02.22.50	5500	10050	130	52	50	63	230	190	10	70	170
B02.22.63	23000	45500	145	65	63	76	320	280	10	100	260
B02.22.80	30000	60000	145	82	80	89	370	320	15	100	300