

LIFTING PIN FCA TRAGBOLZEN MIT FALLRINGSICHERUNG UND FEDER NACH FCA NORM PERNO DI SOLLEVAMENTO FCA



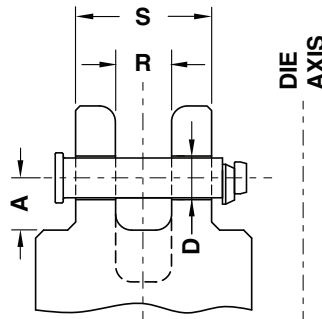
Respect the max load
Maximale Nutzlast beachten
Rispettare il carico Max

WARNING - ACHTUNG - ATTENZIONE:
For safety reason, please consider always that the weight of the die has to be supported by just 2 lifting pins.

Aus Sicherheitsgründen stets berücksichtigen, dass zwei Tragbolzen das gesamte Werkzeuggewicht tragen müssen.

Per ragioni di sicurezza, considerare sempre che il peso dello stampo deve essere sopportato da 2 soli perni.

According - Nach - Secondo:
095.25.



Notes

Material: 42CrMo4 + QT

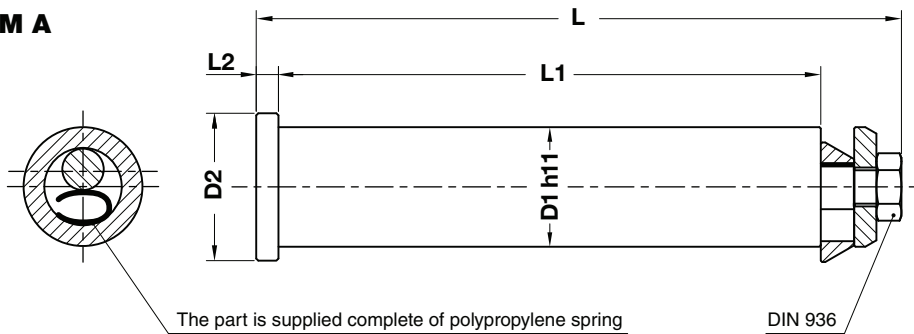
STOCK



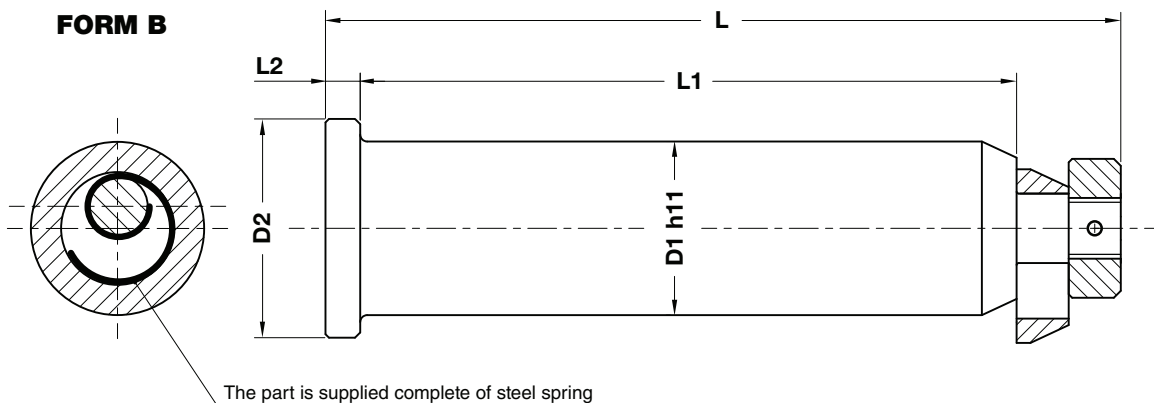
WEB

WEB

FORM A



FORM B



ORDER EXAMPLE	Art.	D1=50
	B02.16.	50

OMCR CODE	Max load (kg)	Max die weight (kg)	A	D	D1	D2	L	L1	L2	R	S	FORM
B02.16.29	4000	8000	60	30	29	38	178.5	150	6	60	140	A
B02.16.33	7000	14000	65	35	33	43	200.5	170	6	60	160	A
B02.16.50	10000	20000	70	52	50	63	230	190	10	85	185	B
B02.16.63	20000	40000	100	65	63	76	320	280	10	110	270	B
B02.16.80	40000	80000	105	82	80	89	370	320	15	110	310	B