

LIFTING PIN VDI 3366 TRAGBOLZEN MIT FALLRINGSICHERUNG VDI 3366 PERNO DI SOLLEVAMENTO VDI 3366



Respect the max load
Maximale Nutzlast beachten
Rispettare il carico Max

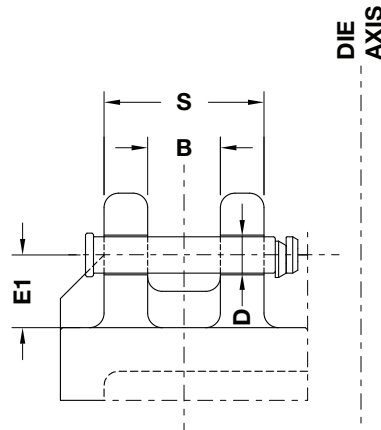
WARNING - ACHTUNG - ATTENZIONE:

For safety reason, please consider always that the weight of the die has to be supported by just 2 lifting pins.

Aus Sicherheitsgründen stets berücksichtigen, dass zwei Tragbolzen das gesamte Werkzeuggewicht tragen müssen.

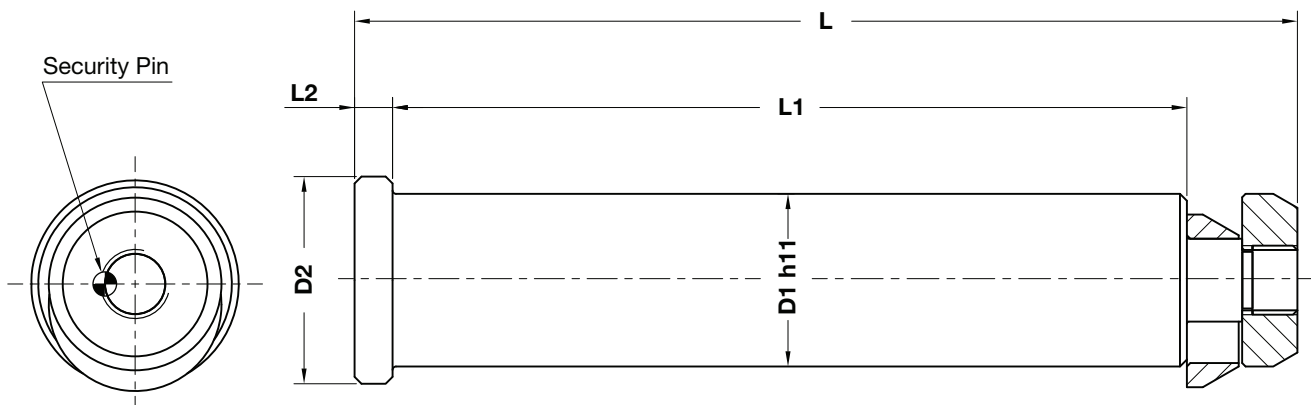
Per ragioni di sicurezza, considerare sempre che il peso dello stampo deve essere sopportato da 2 soli perni.

According - Nach - Secondo:
VDI3366 ed. 03/1997



WEB

WEB



| | | |
|---------------|---------|-------|
| ORDER EXAMPLE | Art. | D1=76 |
| | B02.10. | 76 |

| OMCR CODE | Max load (kg) | Max die weight (kg) | B | D | D1 | D2 | E1 | L | L1 | L2 | S | Material |
|-----------|---------------|---------------------|-----|----|----|----|-----|-----|-----|----|-----|--------------|
| B02.10.32 | 3200 | 6400 | 60 | 34 | 32 | 40 | 63 | 175 | 145 | 10 | 140 | CK45 |
| B02.10.40 | 5000 | 10000 | 80 | 42 | 40 | 50 | 80 | 225 | 188 | 10 | 180 | CK45 |
| B02.10.50 | 8000 | 16000 | 100 | 52 | 50 | 60 | 100 | 273 | 230 | 11 | 220 | CK45 |
| B02.10.63 | 12500 | 25000 | 120 | 65 | 63 | 75 | 125 | 347 | 295 | 14 | 280 | CK45 |
| B02.10.76 | 31500 | 63000 | 140 | 78 | 76 | 95 | 160 | 422 | 360 | 15 | 340 | 42CrMo4 + QT |