

## LIFTING PIN WITH ROPE SAFETY STOP TRAGSCHRAUBE MIT SEILSICHERUNG PERNO DI SOLLEVAMENTO CON SICUREZZA FERMAFUNI

Patent-Nr.: TO2003A000468



Respect the max load  
Maximale Nutzlast beachten  
Rispettare il carico Max

**WARNING - ACHTUNG - ATTENZIONE:**

For safety reason, please consider always that the weight of the die has to be supported by just 2 lifting pins.

Aus Sicherheitsgründen stets berücksichtigen, dass zwei Tragschrauben das gesamte Werkzeuggewicht tragen müssen.

Per ragioni di sicurezza, considerare sempre che il peso dello stampo deve essere sopportato da 2 soli perni.

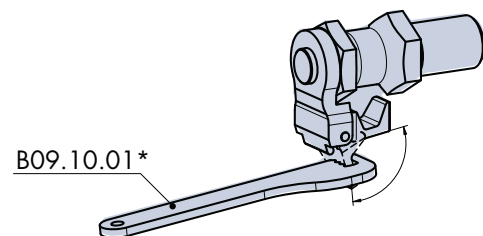
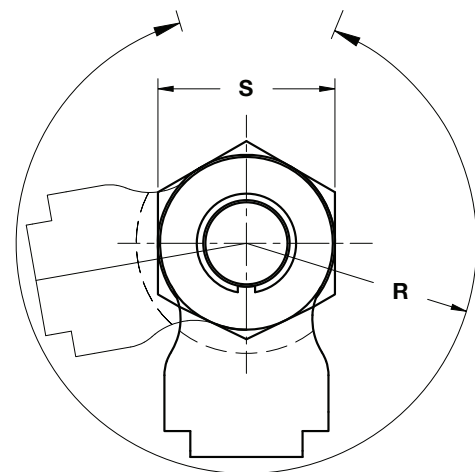
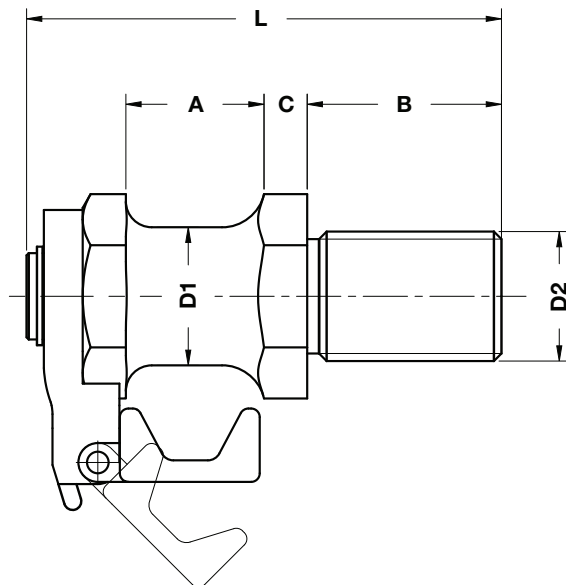
### Notes

**Material:** CK45  
700÷800 N/mm<sup>2</sup>



WEB

WEB



\*To open rope stop safety use key B09.10.01

ORDER EXAMPLE	Art.	D1=32
	B02.06.	32

OMCR CODE	Max load (kg)	Max die weight (kg)	D1	D2	A	B	C	L	S	R
B02.06.20	500	1000	20	M20	22	34	6,5	80	30	38
B02.06.25	1000	2000	25	M24	25	38	8	93	36	42
B02.06.32	1500	3000	32	M30	32	45	10	110	41	50
B02.06.40	2500	5000	40	M36	40	56	12	132	50	57