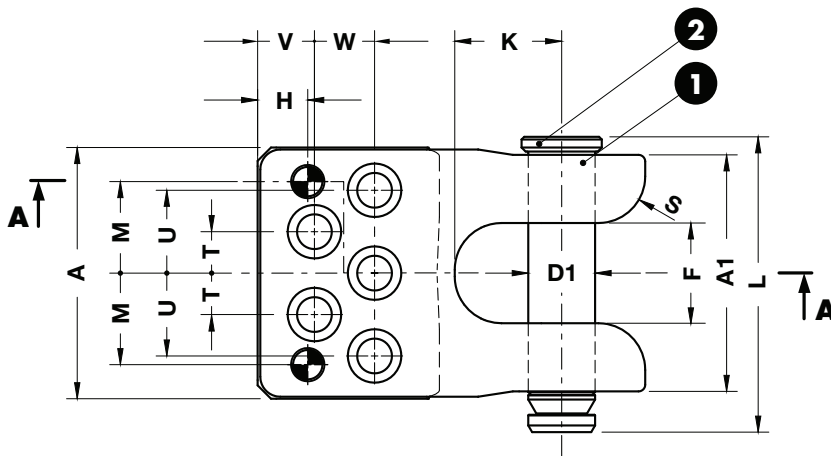
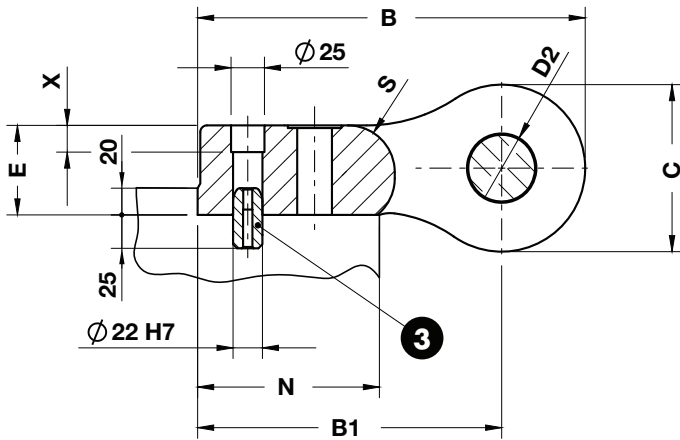
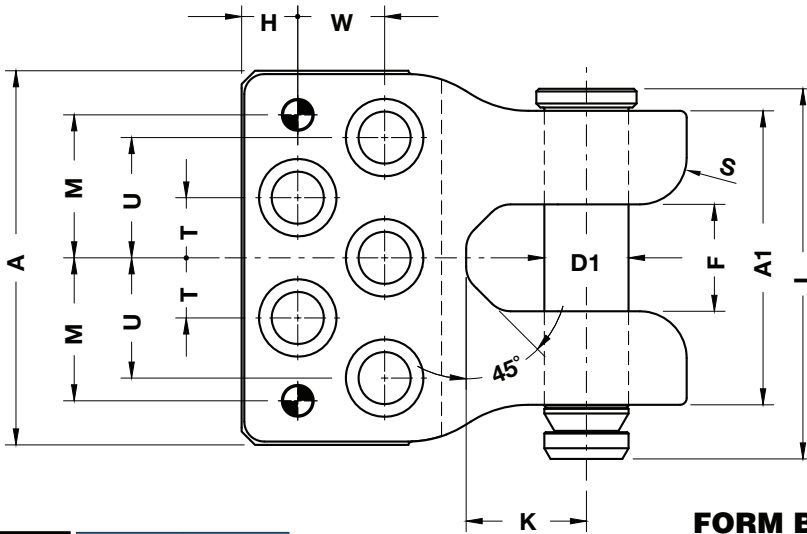


**VW/AUDI LIFTING BRACKET WITH PIN AND LOCATING PINS**  
**TRAGWANGE MIT TRAGBOLZEN UND ZENTRIERBOLZEN NACH VW/AUDI NORM**  
**STAFFA DI SOLLEVAMENTO TIPO VW/AUDI COMPLETA DI PERNO E CENTRAGGI**

**SECTION A-A**



**FORM A**



**FORM B**

**!**

Respect the max load  
 Maximale Nutzlast beachten  
 Rispettare il carico Max

Screw the brackets on steel  
 (minimum quality Fe510 - S355)  
 Die Tragwangen auf Stahl  
 (mit Mindestqualität Fe510 - S355 verschrauben)  
 Avvitare le staffe su acciaio  
 (qualità minima Fe510 - S355)

**WARNING - ACHTUNG - ATTENZIONE:**  
 For safety reason, please consider always that the weight of the die has to be supported by just 2 lifting brackets.  
 Aus Sicherheitsgründen stets berücksichtigen, dass zwei Tragzapfens das gesamte Werkzeuggewicht tragen müssen.  
 Per ragioni di sicurezza, considerare sempre che il peso dello stampo deve essere sopportato da 2 sole staffe.

**Notes**

- 1** Material: St52
- 2** B02.44.
- 3** C11.20.2245

Screws not included

	Art.	Max load
	B01.24.	12500

OMCR CODE	Max load (kg)	Max die weight (kg)	D1	D2	A	A1	B	B1	C	E	F	H	K	L	M	N	S	T	U	V	W	X	FORM	Screws DIN 912-8.8
B01.24.08000	8000	16000	50	52	188	177	290	227,5	125	67	75	37,5	80	221	68,5	135	35	31	62	42,5	45	20	A	M24x100
B01.24.12500	12500	25000	63	65	280	220	333	258	150	91	80	42	90	277	107	150	35	45	90	-	65	46	B	M36x120