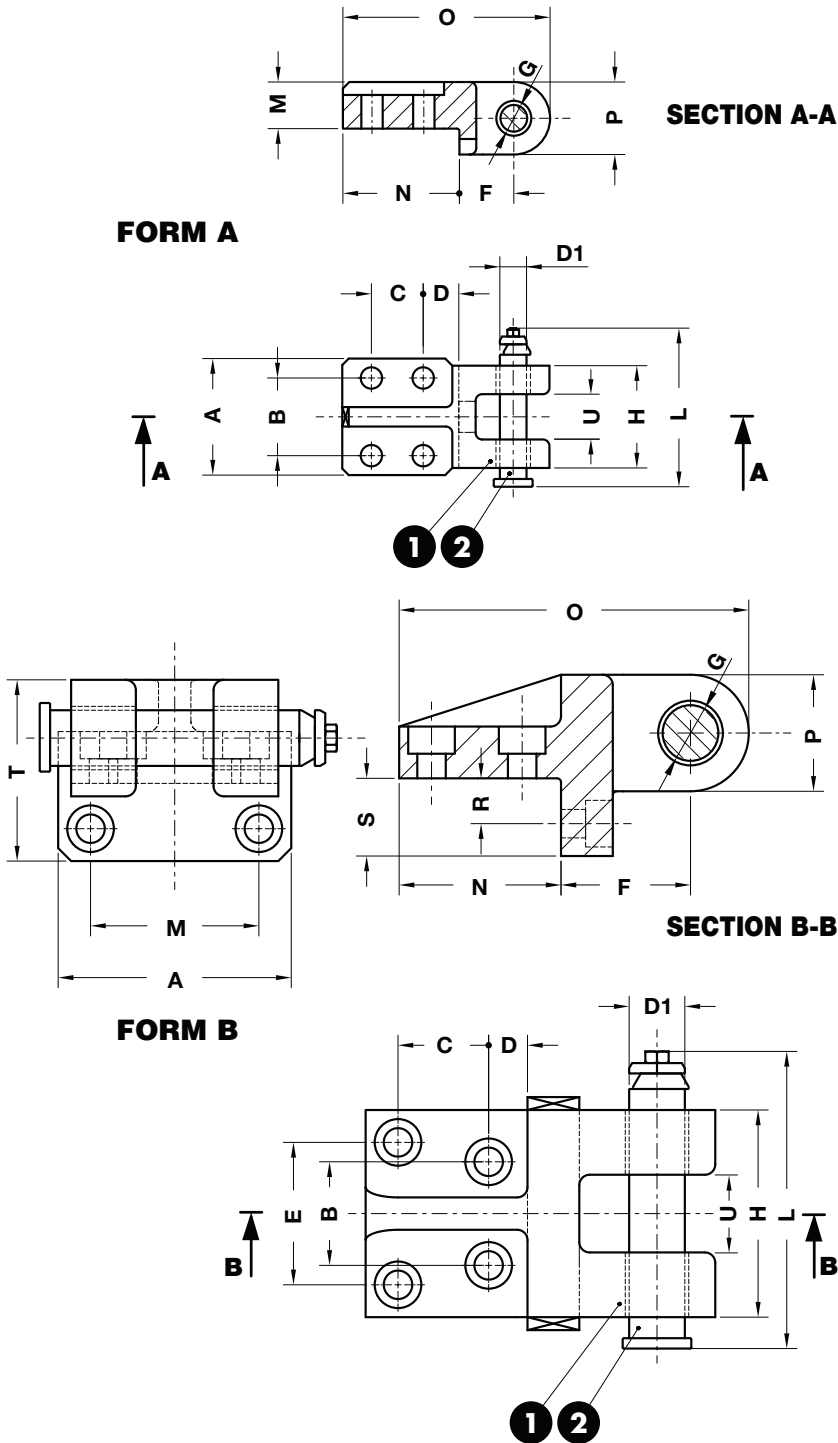


**FCA LIFTING BRACKET WITH PIN**  
**TRAGWANGE MIT TRAGBOLZEN NACH FCA NORM**  
**STAFFA DI SOLLEVAMENTO TIPO FCA COMPLETA DI PERNO**



**!**

Respect the max load  
 Maximale Nutzlast beachten  
 Rispettare il carico Max

Screw the brackets on steel  
 (minimum quality Fe510 - S355)  
 Die Tragwangen auf Stahl  
 (mit Mindestqualität Fe510 - S355 verschrauben)  
 Avvitare le staffe su acciaio  
 (qualità minima Fe510 - S355)

**WARNING - ACHTUNG - ATTENZIONE:**  
 For safety reason, please consider always that the weight of the die has to be supported by just 2 lifting brackets.  
 Aus Sicherheitsgründen stets berücksichtigen, dass zwei Tragzapfens das gesamte Werkzeuggewicht tragen müssen.  
 Per ragioni di sicurezza, considerare sempre che il peso dello stampo deve essere sopportato da 2 sole staffe.

**Notes**

**1** **Material:** CK45  
 800÷1000 N/mm<sup>2</sup>

**2** B02.42.  
 Screws not included

|                      |                |                 |
|----------------------|----------------|-----------------|
| <b>ORDER EXAMPLE</b> | <b>Art.</b>    | <b>Max load</b> |
|                      | <b>B01.15.</b> | <b>7000</b>     |

| OMCR CODE          | Max load (kg) | Max die weight (kg) | A   | B  | C  | D    | D1   | E   | F   | G  | H   | L     | M   | N   | O   | P  | R  | S  | T   | U  | FORM | Screws DIN 912 - 8.8 |
|--------------------|---------------|---------------------|-----|----|----|------|------|-----|-----|----|-----|-------|-----|-----|-----|----|----|----|-----|----|------|----------------------|
| <b>B01.15.0600</b> | 600           | 1200                | 80  | 50 | 40 | 22,5 | 15,6 | -   | 39  | 16 | 70  | 102,5 | 32  | 80  | 145 | 52 | -  | -  | -   | 30 | A    | M12x45               |
| <b>B01.15.1000</b> | 1000          | 2000                | 90  | 60 | 40 | 27,5 | 20,6 | -   | 42  | 21 | 79  | 113,5 | 36  | 90  | 160 | 56 | -  | -  | -   | 35 | A    | M16x55               |
| <b>B01.15.2000</b> | 2000          | 4000                | 100 | 65 | 65 | 32,5 | 25,6 | -   | 60  | 26 | 90  | 128,5 | 50  | 120 | 215 | 70 | -  | -  | -   | 40 | A    | M20x80               |
| <b>B01.15.4000</b> | 4000          | 8000                | 135 | 56 | 60 | 20   | 33   | 84  | 85  | 34 | 125 | 166,5 | 96  | 100 | 221 | 72 | 30 | 50 | 111 | 55 | B    | M16x45               |
| <b>B01.15.7000</b> | 7000          | 14000               | 180 | 80 | 70 | 30   | 43   | 110 | 100 | 44 | 160 | 210,5 | 130 | 125 | 270 | 90 | 35 | 60 | 140 | 60 | B    | M20x60               |

Lifting Elements