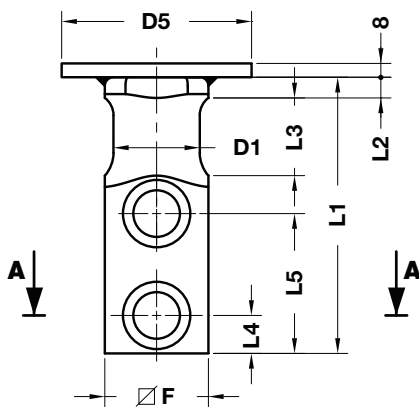
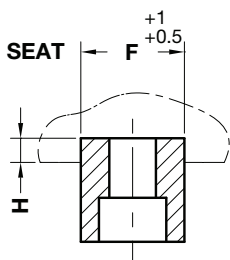
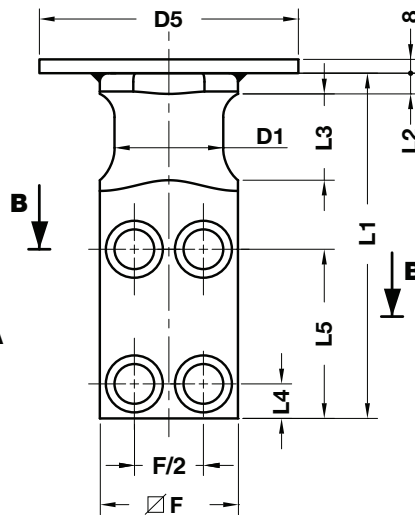


## LIFTING BRACKET WITH ROPE SAFETY STOP TRAGZAPFEN MIT SEILSICHERUNG STAFFA DI SOLLEVAMENTO CON SICUREZZA FERMAFUNI

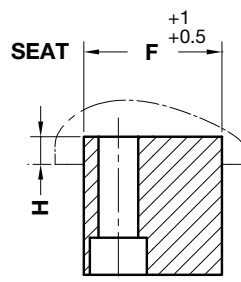
### FORM A



### FORM B



### SECTION A-A



### SECTION B-B



STOCK

3D

CE

WEB

WEB



Respect the max load  
Maximale Nutzlast beachten  
Rispettare il carico Max

Screw the brackets on steel  
(minimum quality Fe510 - S355)

Die Tragwangen auf Stahl  
(mit Mindestqualität Fe510 - S355 verschrauben)

Avvitare le staffe su acciaio  
(qualità minima Fe510 - S355)

#### WARNING - ACHTUNG - ATTENZIONE:

For safety reason, please consider always that the weight of the die has to be supported by just 2 lifting brackets.

Aus Sicherheitsgründen stets berücksichtigen, dass zwei Tragzapfens das gesamte Werkzeuggewicht tragen müssen.

Per ragioni di sicurezza, considerare sempre che il peso dello stampo deve essere sopportato da 2 sole staffe.

#### Notes

**Material:** CK45 - 700÷800 N/mm<sup>2</sup>

Screws not included

ORDER EXAMPLE	Art.	D1=80
	B01.12.	080

OMCR CODE	Max load (kg)	Max die weight (kg)	D1	D5	L1	L2	L3	L4	L5	F	H	FORM	Screws DIN 912 - 8.8
B01.12.016	320	640	16	60	80	6	20	10	44	20	6	A	M8x25
B01.12.020	630	1260	20	70	90	8	25	10	47	25	8	A	M10x30
B01.12.025	1250	2500	25	70	100	8	30	12	50	35	10	A	M12x40
B01.12.032	2000	4000	32	110	120	10	32	16	62	40	10	A	M16x45
B01.12.040	3200	6400	40	110	140	10	40	18	72	50	12	A	M20x60
B01.12.050	5000	10000	50	150	160	12	45	22	81	60	14	A	M24x70
B01.12.063	8000	16000	63	150	200	12	50	20	98	80	16	B	M20x90
B01.12.080	12500	25000	80	150	250	15	65	25	125	100	18	B	M24x110
B01.12.100	20000	40000	100	150	300	15	80	30	155	120	20	B	M30x130