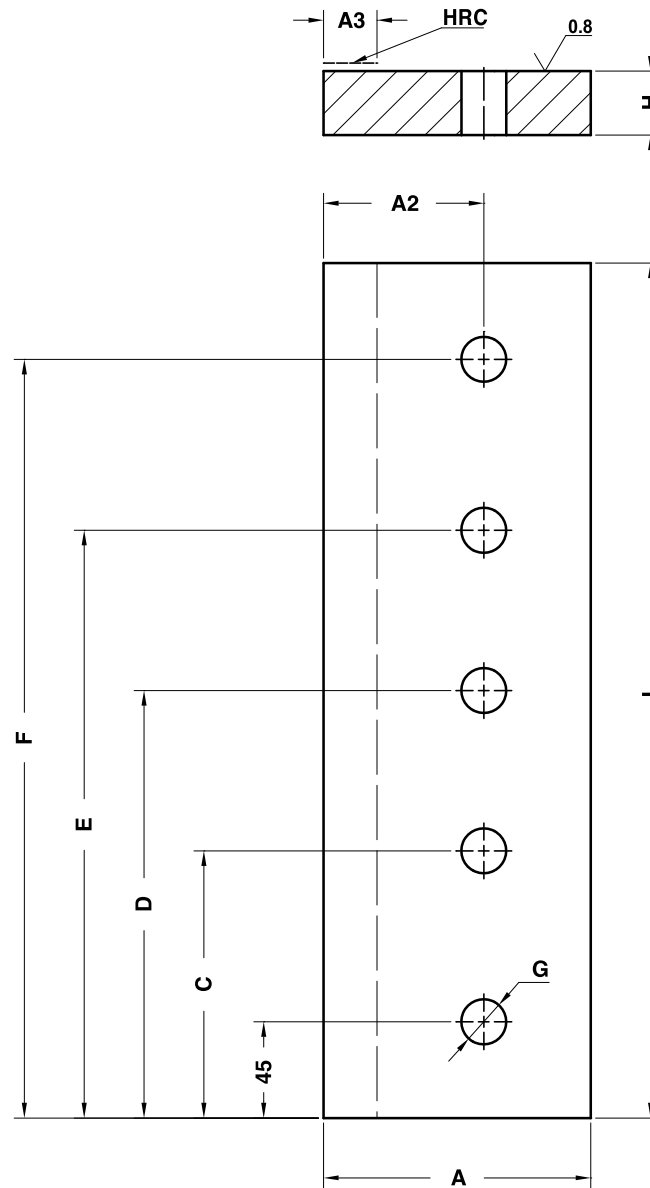


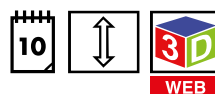
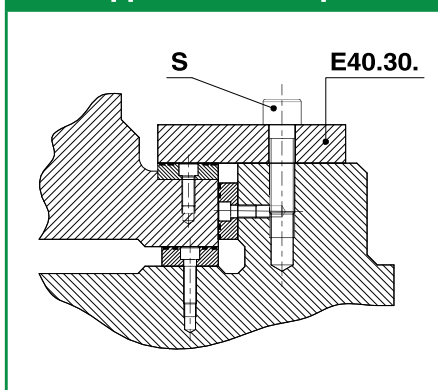
WEAR PLATE STEEL  
GLEITPLATTE STAHL  
PIASTRA GUIDA IN ACCIAIO



Notes

**Material:** CK45  
**HRC:** 58÷60

Application example



	Art.	A=75	H=25	L1=200
	E40.30.	075	25	200

OMCR CODE	A	A2	A3	L	H	C	D	E	F	G	S
E40.30.07525160	75	40	25	160	25	-	-	-	115	17	Nr.2 - M16x60
E40.30.07525200	75	40	25	200	25	-	-	-	155	17	Nr.2 - M16x60
E40.30.07525250	75	40	25	250	25	-	125	-	205	17	Nr.3 - M16x60
E40.30.10025160	100	60	30	160	25	-	-	-	115	17	Nr.2 - M16x60
E40.30.10025200	100	60	30	200	25	-	-	-	155	17	Nr.2 - M16x60
E40.30.10025250	100	60	30	250	25	-	125	-	205	17	Nr.3 - M16x60
E40.30.10025400	100	60	30	400	25	125	200	275	355	17	Nr.5 - M16x60
E40.30.10030160	100	60	30	160	30	-	-	-	115	21	Nr.2 - M20x70
E40.30.10030200	100	60	30	200	30	-	-	-	155	21	Nr.2 - M20x70
E40.30.10030250	100	60	30	250	30	-	125	-	205	21	Nr.3 - M20x70
E40.30.10030400	100	60	30	400	30	125	200	275	355	21	Nr.5 - M20x70
E40.30.12530160	125	75	30	160	30	-	-	-	115	21	Nr.2 - M20x70
E40.30.12530200	125	75	30	200	30	-	-	-	155	21	Nr.2 - M20x70
E40.30.12530250	125	75	30	250	30	-	125	-	205	21	Nr.3 - M20x70
E40.30.12530400	125	75	30	400	30	125	200	275	355	21	Nr.5 - M20x70

Sliding Elements