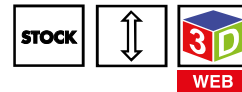
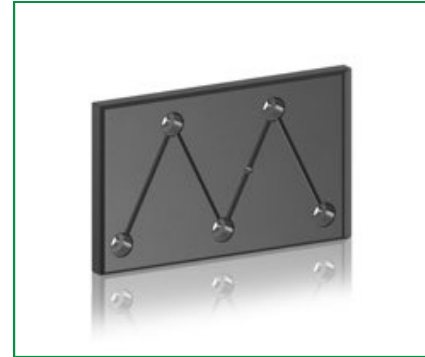
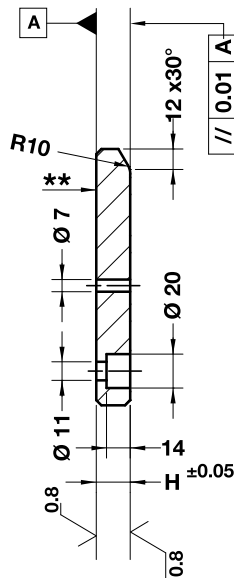


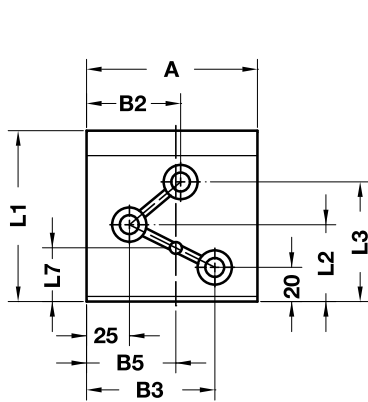
FORM D



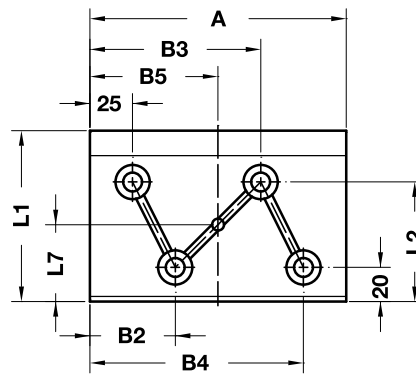
Notes

Material: 16MnCr5
HRC: 58÷60

(**) Not hardened surface



FORM G



FORM H

ORDER EXAMPLE	Art.	A=100	H=21	L1=150
	E40.15.	100	21	150

OMCR CODE	A	H	L1	B2	B3	B4	B5	L2	L3	L4	L5	L6	L7	Form
E40.15.07021100	70	21	100	-	45	-	35	70	-	-	-	-	45	A
E40.15.07021150	70	21	150	35	45	-	35	70	120	-	-	-	45	B
E40.15.07021200	70	21	200	-	45	-	35	70	120	170	-	-	95	C
E40.15.10021100	100	21	100	55	75	-	50	45	70	-	-	-	32,5	G
E40.15.10021150	100	21	150	-	75	-	50	45	95	120	-	-	70	D
E40.15.10021200	100	21	200	-	75	-	50	70	120	170	-	-	95	C
E40.15.10021250	100	21	250	-	75	-	50	70	120	170	220	-	145	E
E40.15.10021300	100	21	300	-	75	-	50	70	120	170	220	270	145	F
E40.15.15021100	150	21	100	50	100	125	75	70	-	-	-	-	45	H
E40.15.15021150	150	21	150	50	100	125	75	45	95	120	-	-	70	D
E40.15.15021200	150	21	200	-	125	-	75	70	120	170	-	-	95	C
E40.15.15021250	150	21	250	-	125	-	75	70	120	170	220	-	145	E
E40.15.15021300	150	21	300	-	125	-	75	70	120	170	220	270	145	F
E40.15.20021100	200	21	100	75	125	175	100	70	-	-	-	-	45	H