

SC 500

ISO 11901 - 1	VDI 3003	B2 4006 (BMW)	075.90.55 (FCA)
PG23D (Mazda)	B8 3180 220 000 001(MB)	K 32 S (Nissan)	E24.54.815.G (PSA)
EM24.54.700 (Renault)	SES-K 5404e (Suzuki)	39D 878 (VW)	



OSAS + OSM = OVER STROKE ACTIVE SAFETY + OVER STROKE MARKER

ACTIVE SAFETY

Il nuovo codice sarà fornito solo ad esaurimento del vecchio

The new code will be supplied only when the old will be out of stock

Der neue Kode wird nur angegeben, wenn der alte nicht mehr lieferbar ist

Le nouveau code sera fourni uniquement lorsque le vieux stock sera épuisé

El nuevo código será suministrado sólo cuando se agoten las existencias del antiguo

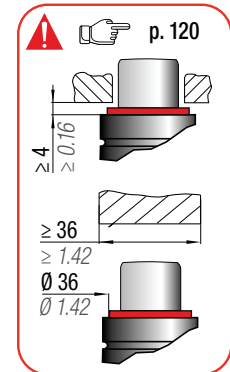
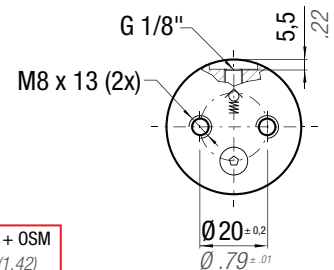
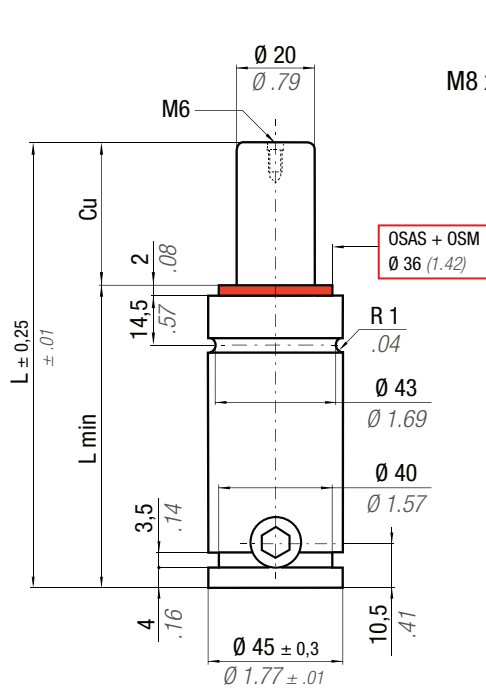
O novo código irá ser fornecido apenas quando o antigo esgotar stock



easu MANIPOL p. 247

* F_{1i} = Isothermal end force at 100% Cu p. 16

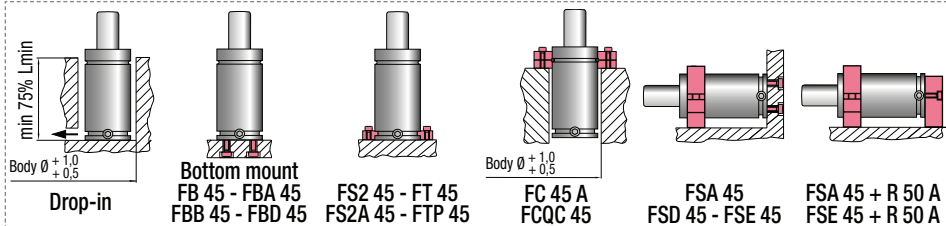
** F_{1p} = Polyphobic end force at 100% Cu



N ₂	0 - 80 °C 32 - 176 °F	ΔP ± 0,33 %/°C	P max 150 bar 2175 psi	P min 20 bar 290 psi	S 3,14 cm ² 0,487 in ²	SPM ~ 40 - 80 (at 20°C)	Max Speed 1,8 m/s	Maintenance kit 39BMS00500D
----------------	--------------------------	---------------------------	------------------------------	----------------------------	--	-------------------------------	----------------------	--------------------------------

CODE PHASING OUT from 04/2021	NEW	Cu		L		L min		F ₀		F _{1i} *		F _{1p} **		V ₀		PED 2014/68/EU		
		mm	inch	mm	inch	mm	inch	daN	lb	daN	lb	daN	lb	cm ³	in ³		~Kg	~lb
SC 500 - 010 - D	♦ SC 500 - 010 - E	10	0.39	105	4.13	95	3.74	470 ± 5% 150 bar 2175 psi + 20 °C +68 °F	1057	614	1381	701	1576	15,8	0,96	0,90	1,98	✓
SC 500 - 013 - D	♦ SC 500 - 013 - E	12,7	0,50	110,4	4,35	97,7	3,85			631	1418	727	1634	18,4	1,12	1,00	2,20	✓
SC 500 - 025 - D	SC 500 - 025 - E	25	0,98	135	5,31	110	4,33			675	1516	794	1785	30,2	1,84	1,09	2,40	✓
SC 500 - 038 - D	SC 500 - 038 - E	38	1,50	161	6,34	123	4,84			696	1565	828	1862	42,7	2,61	1,20	2,65	✓
SC 500 - 050 - D	SC 500 - 050 - E	50	1,97	185	7,28	135	5,31			708	1591	847	1903	54,2	3,31	1,29	2,84	✓
SC 500 - 063 - D	SC 500 - 063 - E	63,5	2,50	212	8,35	148,5	5,85			716	1611	860	1934	67,2	4,10	1,38	3,04	✓
SC 500 - 080 - D	SC 500 - 080 - E	80	3,15	245	9,65	165	6,50			723	1626	871	1959	83,1	5,07	1,50	3,31	✓
SC 500 - 100 - D	SC 500 - 100 - E	100	3,94	285	11,22	185	7,28			729	1639	880	1979	102,3	6,24	1,64	3,62	✓
SC 500 - 125 - D	SC 500 - 125 - E	125	4,92	335	13,19	210	8,27			734	1649	888	1996	126,4	7,71	1,85	4,08	✓
SC 500 - 160 - D	SC 500 - 160 - E	160	6,30	405	15,94	245	9,65			738	1659	895	2011	160,1	9,77	2,10	4,63	✓
SC 500 - 200 - D	SC 500 - 200 - E	200	7,87	485	19,09	285	11,22	741	1666	900	2023	198,6	12,12	2,36	5,20	✓		

♦ Disposable



HOW TO ORDER
p. 121

INSTALLATION GUIDELINE
p. 205