

# NE 24 x 1.5

VDI 3004

W-DX35-60M (Ford)

39D 549 (VW)



## ACTIVE SAFETY



USAS



OPAS

\*  $F_{1i} =$

Isothermal end force at 100% Cu

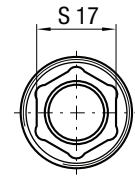
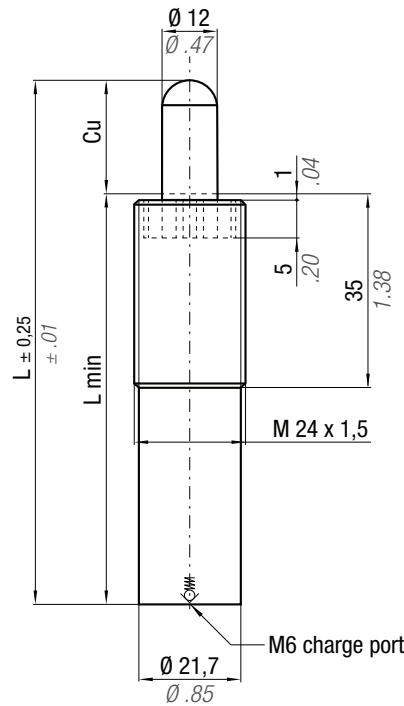


p. 16

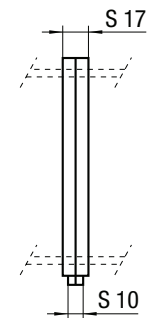


\*\*  $F_{1p} =$

Polytropic end force at 100% Cu

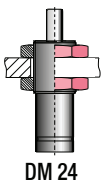


cod. 39CM01A (optional)



CODE	Cu		L		L min		Weight		PED 2014/68/EU	Force color code	P		F <sub>0</sub> Initial force ± 5%		F <sub>1i</sub> End force*	F <sub>1p</sub> End force**
	mm	inch	mm	inch	mm	inch	~Kg	~lb			bar	psi	daN	lb		
NE 24 x 1,5-010-B-...	10	0.39	65	2.56	55	2.17	0,16	0.35	✓	GR	20	290	23	52	1,86 x F <sub>0</sub>	2,54 x F <sub>0</sub>
NE 24 x 1,5-020-B-...	20	0.79	85	3.35	65	2.56	0,18	0.40	✓	BU	40	580	45	101	1,86 x F <sub>0</sub>	2,54 x F <sub>0</sub>
NE 24 x 1,5-030-B-...	30	1.18	105	4.13	75	2.95	0,20	0.44	✓	RD	75	1088	85	191	1,86 x F <sub>0</sub>	2,54 x F <sub>0</sub>
NE 24 x 1,5-040-B-...	40	1.57	125	4.92	85	3.35	0,23	0.51	✓	YW	150	2175	170	382	1,86 x F <sub>0</sub>	2,54 x F <sub>0</sub>
NE 24 x 1,5-050-B-...	50	1.97	145	5.71	95	3.74	0,25	0.55	✓	BK	10-150	145-2175	11-170	25-382	1,86 x F <sub>0</sub>	2,54 x F <sub>0</sub>
NE 24 x 1,5-060-B-...	60	2.36	165	6.50	105	4.13	0,27	0.59	✓							
NE 24 x 1,5-070-B-...	70	2.76	185	7.28	115	4.53	0,29	0.64	✓							
NE 24 x 1,5-080-B-...	80	3.15	205	8.07	125	4.92	0,30	0.66	✓							
NE 24 x 1,5-100-B-...	100	3.94	245	9.65	145	5.71	0,33	0.73	✓							
NE 24 x 1,5-125-B-...	125	4.92	295	11.61	170	6.69	0,35	0.77	✓							

P = nominal charging pressure



DM 24

### HOW TO ORDER

p. 31

### INSTALLATION GUIDELINE

p. 205