

ACTIVE SAFETY



OSAS



USAS

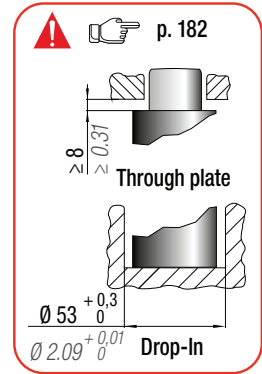
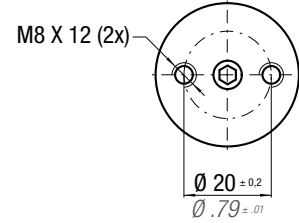
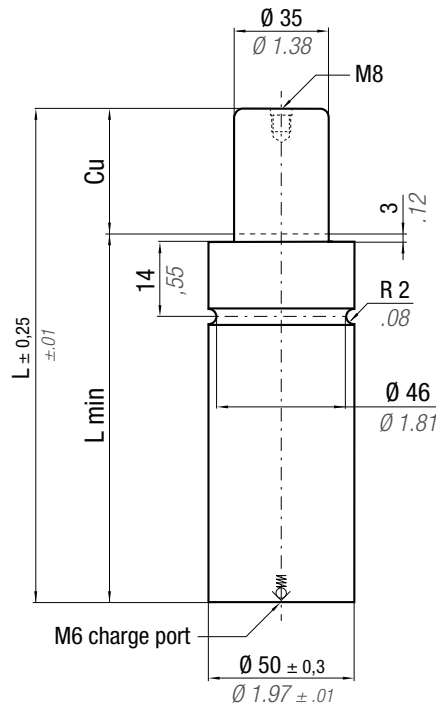


OPAS

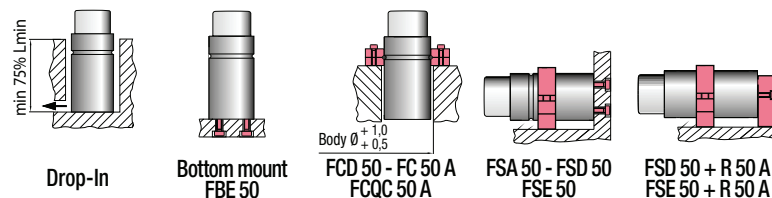
* F_{1i} =
Isothermal
end force
at 100% Cu

p. 16

** F_{1p} =
Polytropic
end force
at 100% Cu



CODE	N ₂	0 - 80 °C 32 - 176 °F	ΔP ± 0,33 %/°C	P max 209 bar 3031 psi	P min 20 bar 290 psi	S 9,62 cm ² 1.491 in ²	SPM ~ 40 - 80 (at 20°C)	Max Speed 1,6 m/s	Maintenance kit 39BMMP02000A	PED 2014/68/EU	Cu		L		L min		F ₀		F _{1i} *		F _{1p} **		V ₀		~Kg	~lb
											mm	inch	mm	inch	mm	inch	daN	lb	daN	lb	daN	lb	cm ³	in ³		
MP 2000 - 010 - A											10	0.39	90	3.54	80	3.15	2000 ± 5% 209 bar 3031 psi + 20 °C +68 °F	2634	5921	2902	6524	52,4	3,20	0,76	1,68	✓
MP 2000 - 015 - A											15	0.59	115	4.53	100	3.94		2617	5883	2880	6474	80,4	4,90	0,89	1,96	✓
MP 2000 - 020 - A											20	0.79	125	4.92	105	4.13		2775	6238	3088	6942	89,6	5,47	0,93	2,05	✓
MP 2000 - 025 - A											25	0.98	135	5.31	110	4.33		2916	6555	3276	7365	98,7	6,02	0,98	2,16	✓
MP 2000 - 032 - A											32	1.26	150	5.91	118	4.65		3074	6911	3487	7839	112,8	6,88	1,04	2,29	✓
MP 2000 - 038 - A											38	1.50	165	6.50	127	5.00		3153	7088	3593	8077	127,5	7,78	1,11	2,45	✓
MP 2000 - 045 - A											45	1.77	180	7.09	135	5.31		3269	7349	3751	8433	141,6	8,64	1,18	2,60	✓
MP 2000 - 050 - A											50	1.97	190	7.48	140	5.51		3355	7542	3868	8696	150,7	9,19	1,22	2,69	✓
MP 2000 - 056 - A											56	2.20	205	8.07	149	5.87		3398	7639	3926	8826	165,5	10,10	1,29	2,84	✓
MP 2000 - 063 - A											63	2.48	220	8.66	157	6.18		3480	7823	4039	9080	179,5	10,95	1,36	3,00	✓
MP 2000 - 080 - A											80	3.15	255	10.04	175	6.89	3668	8246	4299	9665	211,9	12,93	1,51	3,33	✓	



HOW TO ORDER

p. 183

INSTALLATION GUIDELINE

p. 205