



SW

Il nuovo codice sarà fornito solo ad esaurimento del vecchio

The new code will be supplied only when the old will be out of stock

Der neue Kode wird nur angegeben, wenn der alte nicht mehr lieferbar ist

Le nouveau code sera fourni uniquement lorsque le vieux stock sera écoulé

El nuevo código será suministrado sólo cuando se agoten las existencias del antiguo

O novo código irá ser fornecido apenas quando o antigo esgotar stock

ACTIVE SAFETY



OSAS



USAS

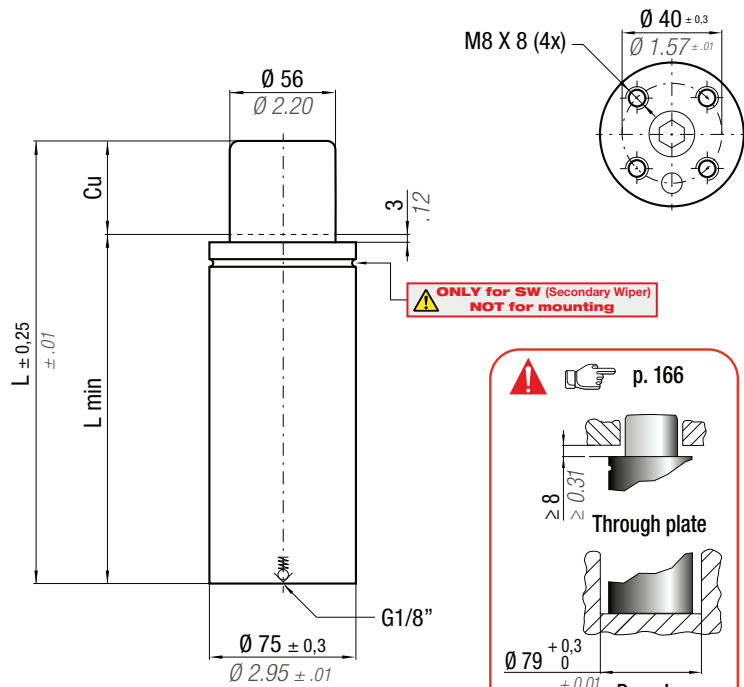


OPAS

easu MANIFOLD p. 247

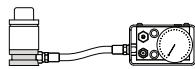
* F_{1i} = Isothermal end force at 100% Cu p. 16

** F_{1p} = Polytrophic end force at 100% Cu



N ₂	0 - 80 °C 32 - 176 °F	ΔP ± 0,33 %/°C	P max 200 bar 2900 psi	P min 20 bar 290 psi	S 24,63 cm ² 3.817 in ²	SPM ~ 30 - 70 (at 20°C)	Max Speed 1,6 m/s	Maintenance kit 39BMMLO4700C	
CODE	NEW	Cu	L	L min	F₀	F_{1i} *	F_{1p} **	V₀	
PHASING OUT from 05/2019		mm inch	mm inch	mm inch	Initial force daN lb	End force * daN lb	End force ** daN lb	cm ³ in ³	~Kg ~lb
ML 4700 - 015 - C	ML 4700 - 015 - D	15 0.59	100 3.94	85 3.35	4925 11071	6982 15697	7878 17711	158 9.64	1,72 3.79
ML 4700 - 025 - C	ML 4700 - 025 - D	25 0.98	120 4.72	95 3.74	± 5%	7883 17721	9119 20500	204 12.46	1,90 4.19
ML 4700 - 038 - C	ML 4700 - 038 - D	38 1.50	150 5.91	112 4.41	200 bar	8462 19023	9933 22330	277 16.88	2,17 4.78
ML 4700 - 050 - C	ML 4700 - 050 - D	50 1.97	180 7.09	130 5.12	2900 psi	8683 19520	10247 23035	351 21.39	2,44 5.38
ML 4700 - 063 - C	ML 4700 - 063 - D	63 2.48	210 8.27	147 5.79		8963 20150	10647 23936	423 25.82	2,72 6.00
ML 4700 - 080 - C	ML 4700 - 080 - D	80 3.15	250 9.84	170 6.69	+20 °C +68 °F	9191 20663	10975 24673	520 31.74	3,08 6.79

KIT FOR LINKING



code: 39FML04700B



Seal (1x)



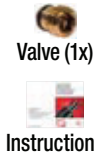
Washer (6x)



Screw (3x)



Bottom base (1x)



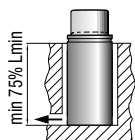
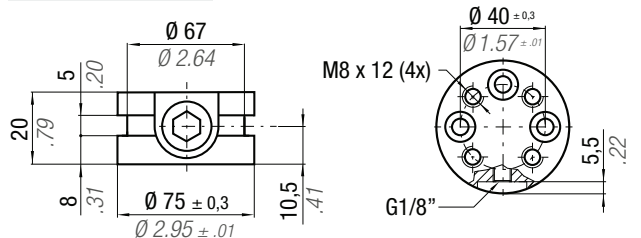
Valve (1x)

Instructions

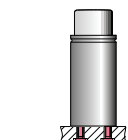


Sostituire ogni 1.000.000 di cicli. Replace every 1 million cycles. Nach 1 Mio. Hübe austauschen. Remplacez à chaque million de cycles. Reemplazar cada 1 millón de ciclos. Substituir a cada 1 milhão de ciclos.

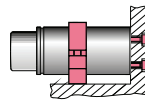
Bottom base dimension



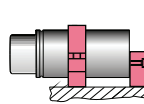
Drop-In



Bottom mount - FB 75
FBA 75 - FBB 75
FBC 75 - FBD 75



FSA 75 - FSD 75
FSE 75



FSD 75 + R 75 A
FSE 75 + R 75 A

HOW TO ORDER

p. 167

INSTALLATION GUIDELINE

p. 205