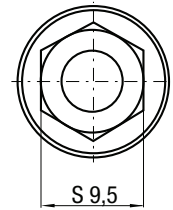
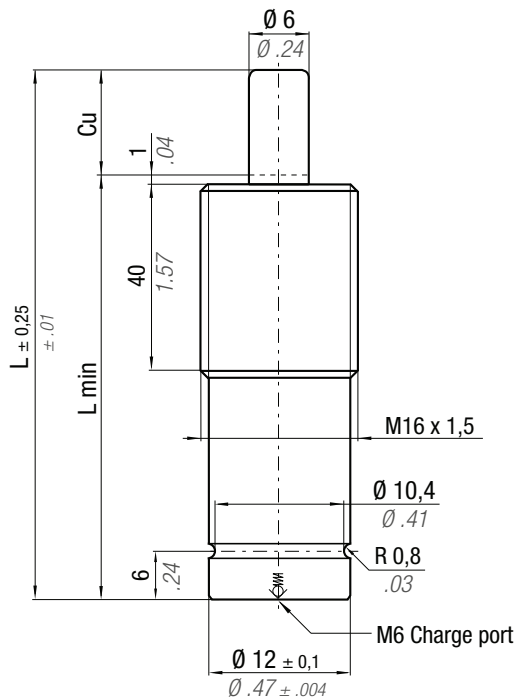


ACTIVE SAFETY

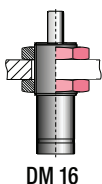
* F_{1i} = Isothermal end force at 100% Cu p. 16 Polytrophic end force at 100% Cu



Force color code	P		Fo Initial force $\pm 5\%$ at +20°C +68°F	
	bar	psi	daN	lb
GR	45	653	13	29
BU	90	1305	25	56
RD	135	1958	38	85
YW	180	2610	50	112
BK	20-180	290-2610	6-50	13-112



CODE		0 - 80 °C 32 - 176 °F	ΔP $\pm 0,33 \% / ^\circ C$	P max 180 bar 2610 psi	P min 20 bar 290 psi	S 0,28 cm ² 0,043 in ²	SPM ~ 100 - 150 (at 20°C)	Max Speed 1,8 m/s	Maintenance kit Disposable		Vo		Weight		
											mm	inch	~Kg	~lb	
M50 - 007 - A - ... - TBM1											7	0,28	0,03	0,07	✓
M50 - 010 - A - ... - TBM1											10	0,39	0,03	0,07	✓
M50 - 013 - A - ... - TBM1											12,7	0,50	0,03	0,07	✓
M50 - 015 - A - ... - TBM1											15	0,59	0,03	0,07	✓
M50 - 019 - A - ... - TBM1											19	0,75	0,03	0,07	✓
M50 - 025 - A - ... - TBM1											25	0,98	0,03	0,07	✓
M50 - 038 - A - ... - TBM1											38	1,50	0,04	0,09	✓
M50 - 050 - A - ... - TBM1											50	1,97	0,05	0,11	✓
M50 - 063 - A - ... - TBM1											63,5	2,50	0,06	0,13	✓
M50 - 075 - A - ... - TBM1											75	2,95	0,06	0,13	✓
M50 - 080 - A - ... - TBM1											80	3,15	0,07	0,15	✓
M50 - 100 - A - ... - TBM1											100	3,94	0,08	0,18	✓
M50 - 125 - A - ... - TBM1											125	4,92	0,09	0,20	✓



HOW TO ORDER

p. 39

INSTALLATION GUIDELINE

p. 205